

Fitchburg State University Today

Nov. 17, 2014 - Vol 5, Issue 6

In This Issue

- [Search updates](#)
- [Gregoire appointed to BHE](#)
- [Agreement opens doors to health careers](#)
- [Film, TV actor to share stories](#)
- [International Month observed](#)
- [Science Colloquium highlights research](#)
- [Community Read continues this month](#)
- [Speaker Series resumes](#)
- [The Importance of Being Earnest](#)
- [CenterStage and cultural events](#)
- [Faculty Notes](#)

Quick Links

- www.fitchburgstate.edu
- [Public Relations](#)
- [Campus News](#)
- [Campus Calendar](#)
- [Graduate and Continuing Education](#)
- [Fitchburg State in the News](#)

Find us on Facebook 




Broadcast Yourself



[Join Our Mailing List](#)

Presidential and provost search updates



The [Presidential Search Committee](#) met for two days last week in Boston interviewing a slate of candidates in executive session. The goal of the interviews was to pare down the list of applicants into a group of finalists, whose names and profiles will be shared with the campus community.

The search committee is in the midst of that work now, with a plan to have the slate of finalists announced in the coming days. The campus and community will be notified of the schedule of campus visits by the finalists as soon as it is finalized. Committee members are hopeful they can have a report to the Board of Trustees - which will make the final selection - in December. Stay tuned.

The next meeting of the [Provost Search Committee](#), meanwhile, will be held **Tuesday, Dec. 2** from 12:30 to 1:30 p.m. in the Academic Affairs Conference Room in the Sanders Administration Building. A full [position profile](#) has been posted on the university's website.

All search committee meetings are open to the public, though the group will enter into executive session to discuss specific candidates until a field of finalists is named.

[Witt/Kieffer](#), the search firm hired by the Board of Trustees to assist in the presidential search, will also be amassing candidates for the provost position.

Feedback on the provost search is welcome throughout the process at provostsearch@fitchburgstate.edu.

Gregoire appointed to state Board of Higher Education

Fitchburg State senior Nathan A. Gregoire of Ludlow has been sworn in as student representative to the Massachusetts Board of Higher Education.

Gregoire, pursuing a degree in criminal justice, attended his first meeting of the board in October after being appointed to the position by Gov. Deval L. Patrick. He was sworn in Wednesday, Nov. 5 by State Rep. Stephen L. DiNatale, D-Fitchburg.

"I am honored to represent my fellow students on the Board of Higher Education," said Gregoire, who is also president of Fitchburg State's Student Government Association and formerly served as the elected student representative to the university's Board of Trustees. "It's going to be an exciting time."



Nathan Gregoire, center, following his swearing in by State Rep. Stephen DiNatale, left, and President Antonucci.

The Board of Higher Education is responsible for defining the mission of and coordinating the Commonwealth's system of public higher education and its institutions.

"It is an honor for the school and it's more of an honor for Nate and the impact he's had statewide," said Fitchburg State President Robert V. Antonucci.

Gregoire is the second Fitchburg State student to serve as a student representative to the Board of Higher Education. The last Fitchburg State student to hold the post-which rotates between community colleges, state universities and the University of Massachusetts-was Eric Gregoire, Nathan's brother, who graduated from Fitchburg State in 2011.

Nathan Gregoire's term on the Board of Higher Education will expire April 30, 2015.

University signs early admission agreement with school of osteopathic medicine

Fitchburg State graduates will be able to expedite their studies in several areas of osteopathic medicine as a result of a new Early Acceptance Program (EAP) agreement signed by President Antonucci and President John M. Ferretti, D.O. of the Lake Erie College of Osteopathic Medicine (LECOM) in Pennsylvania.

The agreement outlines early acceptance opportunities for Fitchburg State students interested in LECOM's programs, including doctor of osteopathic medicine, doctor of dental medicine and doctor of pharmacy.



At the signing ceremony, from left: Interim Vice President for Academic Affairs Paul Weizer, President Antonucci, Biology/Chemistry Chairman Mel Govindan and Interim Dean of Health and Natural Sciences Meg Hoey.

LECOM is a private institution with a main campus in Erie, Pa. as well as branches in

Greensburg, Pa. and Bradenton, Fla. Its mission is to prepare students to become osteopathic physicians, pharmacy practitioners, and dentists through programs of excellence in education, research, clinical care, and community service to enhance the quality of life through improved health for all humanity. The professional programs are dedicated to serve all students through innovative curriculum and the development of postdoctoral education and inter-professional experiences.

"This agreement will open doors of opportunity to our students," Fitchburg State President Antonucci said. "With our new, state of the art science facilities, and a rejuvenated chemistry major, we are well-positioned to prepare students for careers in the health sciences. This agreement with the Lake Erie College of Osteopathic Medicine provides yet another avenue for our students to succeed."

"The Early Acceptance Program is a win-win for both the undergraduate school and LECOM," Dr. Ferretti said. "This gives the undergraduate school an additional tool to attract new students to pre-health degree programs. At LECOM, we know that the EAP students who matriculate from an affiliated undergraduate institution have received professional counseling and guidance, properly preparing them for the academic rigors of professional school while instilling in them a strong passion for improving healthcare."

Under the agreement, Fitchburg State students must apply for admission to LECOM programs either before matriculation or during their first two years on campus. Successful students will be given provisional acceptance to the program, and upon meeting final requirements will matriculate at the LECOM campus of their choice.

Fitchburg State Professor Mel Govindan, chairman of the university's Biology/Chemistry Department, advises dozens of students considering careers in health sciences, including physician assistant, pharmacy, allopathic medicine, osteopathic medicine, physical therapy and dentistry, among other tracks. The university has seen an increase in the number of graduates pursuing further education in these fields over the past 10 years, including two students currently accepted to LECOM.

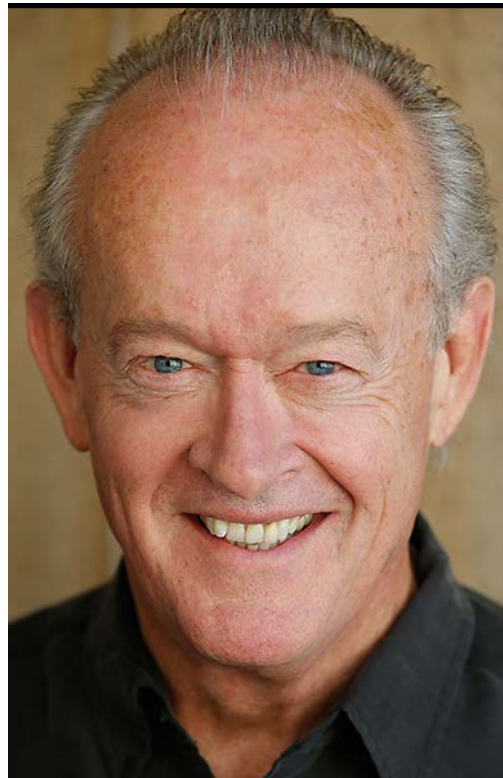
Fitchburg State Dean of Health and Natural Sciences Margaret Hoey commended Govindan's work opening doors to professional programs like LECOM's. "This agreement allows us to take our commitment to the students to the next level," Hoey said.

Film, TV and stage actor Paul Vincent O'Connor presents free workshops Nov. 18

Professional actor Paul Vincent O'Connor, a 1972 Fitchburg State graduate with more than 30 years' experience in film, television and theater, will be back on campus this week to provide students, faculty, staff and the community the opportunity to hear his unique insights into the craft.

O'Connor's TV credits include "The Closer," "24," "The West Wing," "The X-Files," "NYPD Blue," "ER," among many others. He has appeared in numerous films including the Oscar-nominated "Seabiscuit" and "Inherit the Wind" with Jack Lemmon and George C. Scott. On the stage he has performed in acclaimed works such as August: Osage County, The Cripple of Inishmaan, The Iceman Cometh and Henry IV (Parts 1 and 2).

On **Tuesday, Nov. 18**, O'Connor will lead an open class at 9:30 a.m. in Kent Recital Hall in the Conlon Fine Arts Building on "Page to Script Analysis." That will be followed at 11 a.m. by a presentation entitled "History of Theater," also at



Paul Vincent O'Connor

Kent Recital Hall.

The day will conclude with a master class in acting at 2:30 p.m. in Weston Auditorium to be followed by a question and answer session and reception. All the events Tuesday are open to the campus community and the public.

O'Connor's visit is presented by the Fitchburg State Communications Media Department in association with the Alumni Association.

Fitchburg State observes International Month in November

Fitchburg State University continues its observation of International Month in November with a series of presentations, contests and programs celebrating the global community.

Monday, Nov. 17

- Verona Reunion, 3:30 to 5 p.m., Hammond S08

Tuesday, Nov. 18

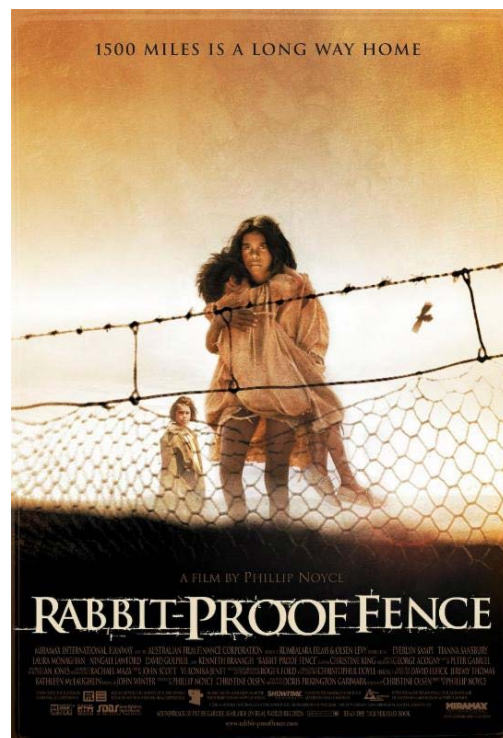
- "Spoken Word" 8 to 10:30 p.m., Falcon Hub

Wednesday, Nov. 19

- Center for Conflict Studies and International Studies Speaker Series, film screening and talk with director Samuel Centore, who will present and introduce two short documentaries, "Passing Ellenville" and "All About Amy," 3:30 to 5:30 p.m., Ellis White Lecture Hall

Thursday, Nov. 20

- Exploring the EPals Community, 12:30 to



"Rabbit Proof Fence" will be screened on

Nov. 20, during International Month.

1:45 p.m., McKay C159

- Film screening, *Rabbit Proof Fence*, Fitchburg Public Library Film Series, Fitchburg Public Library, 4 to 6 p.m. (also part of the university's [Community Read](#))

Monday, Nov. 24

- Film screening of "In God's Land" followed by talk with film director Panjak Rishi Kumar, 12:30 to 2:30 p.m., Science Lecture Hall.
- Second Annual International Potluck Dinner & Poetry Slam, 5:30 to 7:30 p.m., Falcon Hub

Science Colloquium to feature faculty, student research on Nov. 20

Faculty and students from the Biology/Chemistry and GeoPhysical Sciences will present poster sessions of their research on **Thursday, Nov. 20** from 3:30 to 5:30 p.m. in the science center lobby. Refreshments will be served and there will be a contest - with prizes - for people learning about the research going on within the science departments at Fitchburg State.



Community Read continues with talks, films and photography exhibit

The university continues its year-long [Community Read](#) of legal scholar Michelle Alexander's *The New Jim Crow* with film screenings on campus and in the city.

The New Jim Crow challenges the notion that the election of Barack Obama signals a new era of colorblindness. Alexander argues instead that racial caste in America has not been ended, just redesigned. The book explores the concept that the U.S. criminal justice system functions as a contemporary system of racial control, relegating millions to a permanent second-class status.

Throughout the Community Read, Fitchburg State faculty and staff will join with experts and artists from this region and beyond to explore the issues raised in the book. The public is invited to add their voices to the conversation as the university seeks to create community through communication.



The Third Thursday Film Series, bridging the campus and the city, continues on **Thursday, Nov. 20** at 4 p.m. with a screening of the film *Rabbit-Proof Fence* (2002) at the [Fitchburg Public Library](#), 610 Main St. This extraordinary story of courage and faith is based on the actual experiences of three girls who fled from the repressive life of Moore River Native Settlement in Australia, following along the rabbit-proof fence back to their homelands. Admission is free.

The work of award-winning photographer Lou Jones is now on display at the media wall in Conlon Hall. "Final Exposure: Portraits from Death Row" will be featured through Wednesday, Nov. 12. Jones combines powerful images of death row inmates with revealing interviews and commentary in this extraordinary volume. These portraits and voices humanize the condemned

men and women without minimizing the magnitude of their crimes or the pain of the victims and their families. Together, they open one's eyes to the chilling reality of death row and challenge readers to question the morality of capital punishment.

The series continues in the spring on a lighter note with a performance by comedian W. Kamau Bell on **Thursday, Feb. 26** at 8 p.m. in Kent Recital Hall in the Conlon Fine Arts Building, 367 North St. Just like skinny jeans, superhero movies and celebrity weight loss, racism continues to make a comeback. Comedian W. Kamau Bell is here to make (non)sense of all of it all. TheW. Kamau Bell Curve: Ending Racism in About an Hour is a hilarious exploration of the current state of America's racism, combined with a little (unknown) history, a little Powerpoint and a whole bunch of Kamau. The Curve is a seamless mix of stand-up comedy, video and audio clips, personal stories and solo theatrical performance. One part manifesto, one part diatribe and several parts funny, this evening is sure to provide laughs and provoke thought. Be advised, the performance features mature comment. Tickets are \$25 for adults, \$20 for seniors, Fitchburg State alumni and free for Fitchburg State students and can be purchased at the Weston Box Office, 333 North St., which is open Thursday and Friday from 12:30 to 3:30 p.m. Tickets can also be ordered [online](#).

The Community Read is sponsored by the university's Carl T. Witherell '32 Fund. A full listing of events, including film screenings and art installations running into the spring, can be found online at fitchburgstate.edu/communityread.

Speaker Series resumes for 2014-15

The Fitchburg State University Speakers Series has resumed for the academic year. All the talks will be held from 12:30 to 1:45 p.m. and refreshments will be served.

On **Monday, Dec. 1**, Heather Urbanski (English Studies) will discuss "Social and Cultural Memory in *The Hunger Games*" in Hammond Hall room 314.

On **Feb. 2, 2015**, Kisha Tracy (English Studies) will discuss "Maternal Lament and Misremembering" in the Center for Teaching and Learning.

On **March 2, 2015**, Luis Rosero (Economics, History and Political Science) will discuss "Sustainability of the Decline in Inequality in Latin America: The Effects of Changing Trade Patterns" in the Center for Teaching and Learning.

On **April 6, 2015**, Rob Carr, Jon Krasner and Randy Howe (Communications Media) will discuss "Human-Technology Interactivity and Agency in Media Environments" in the Center for Teaching and Learning.

And on **May 4, 2015**, Susan Wadsworth (Humanities) will discuss "Rocks and Ruins: An Artist's Sabbatical in the Southwest" in the Center for Teaching and Learning.

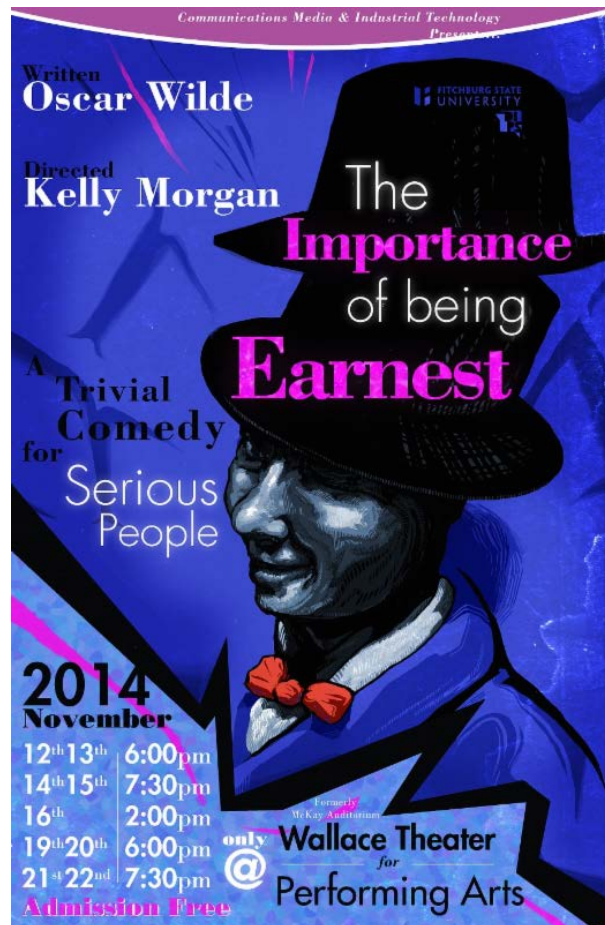
The Importance of Being Earnest continues its run this week

Oscar Wilde's *The Importance of Being Earnest*, a classic comedy of manufactured mistaken identity, is now in performance by Fitchburg State University's Communications Media and Industrial Technology Departments.

The play opened last week at the Wallace Theater for the Performing Arts at the McKay Complex, 67 Rindge Road. Upcoming performances include 6 p.m. Nov. 19 and 20; at 7:30 p.m. Nov. 21 and 22. Admission is free and open to the

public.

A sparkling wit and social satire make this one of the most beloved comedies in the English language. It revolves around the most ingenious case of manufactured mistaken identity ever put into a play. Jack Worthing and his best friend Algernon Moncrieff are both wooing ladies who think their names are Ernest. Each has invented an alternate person in order to get out of social obligations. Their deceptions weave tangled webs, as they each try to protect their secrets while navigating the shark-infested waters of love.



The production is being directed by Fitchburg State faculty member Kelly Morgan.

The play, whose full title is *The Importance of Being Earnest, A Trivial Comedy for Serious People*, was first performed in 1895 in London. Its high farce and witty dialogue have helped make it Wilde's most enduring play.

CenterStage at Fitchburg State

Coming in December: "In the Christmas Mood" with the Glenn Miller Orchestra

Fitchburg State invites the community to get into the holiday spirit with the Glenn Miller Orchestra on **Saturday, Dec. 13** at 7 p.m. in Weston Auditorium, 353 North St.

Tickets for "In the Christmas Mood" are \$28 for adults; \$25 for seniors and Fitchburg State alumni; and \$5 for students. The Weston Box Office, located inside Weston Auditorium, is open Thursday and Friday from 12:30 to 3:30 p.m. and can be reached at 978-665-3347. Tickets may also be purchased [online](#).



The Glenn Miller Orchestra performs Saturday, Dec. 13.

With its celebration of swing and jazz, the Glenn Miller Orchestra is considered to be one of the

greatest bands of all time. Combined with traditional holiday classics like "Winter Wonderland," "Jingle Bells" and "Let it Snow," they will surely get you in the Christmas mood. Featuring an ensemble of 18 musicians, this holiday concert spectacular brings the season to life with timeless sound and iconic melodies of Miller's unmistakable music.

About the Glenn Miller Orchestra

The legendary Glenn Miller was one of the most successful of all dance bandleaders back in the Swing Era of the 1930s and '40s. A matchless string of hit records, the constant impact of radio broadcasts and the drawing power at theatres, hotels and dance pavilion, built and sustained the momentum of popularity.

Miller disbanded his musical organization in 1942 at the height of its popularity to volunteer for the Army, leading the Glenn Miller Army Air Force Band to entertain servicemen at live and radio shows. On Dec. 15, 1944, he took off in a single engine plane from Europe to precede his band to France, disappearing over the English Channel, never to be seen again.

The band reformed in 1956 and has been on the road ever since, led since January 2012 by vocalist Nick Hilscher. Today, the 18 member ensemble continues to play many of the original Miller arrangements both from the civilian band and the AAFB libraries. Additionally, it also plays some more modern selections arranged and performed in the Miller style and sound.

Art Exhibits

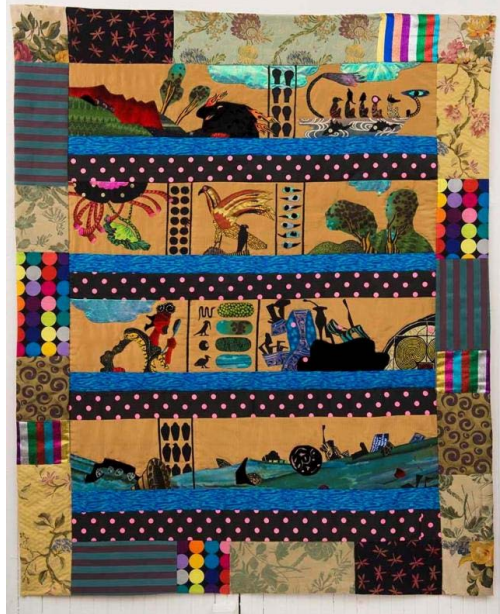
In the Hammond Hall Art Gallery, acclaimed quilt maker [Clara Wainwright](#) will be displaying works through **Wednesday, Dec. 17**. Wainwright stitches together personal and moving stories using vibrant fabrics and community. Through a craft that has roots deeply sewn into the heart of America, Wainwright's cloth narratives explore war, climate change, delight and fantasy. This exhibition will consist of a group of quilts made over the past 10 years that deal with life, politics and joy.

Wainwright will discuss her work in a gallery talk **Tuesday, Nov. 18** at 3:30 p.m. in Hammond Hall.

In the Gallery at Sanders, inside the Sanders Administration Building, design and music aficionado [Clifford Stoltze](#) will share his "POSTGIG," his traveling exhibition of original music posters. Stoltze, author of 1000 Music Graphics, will present original works by Modern dog, Aesthetic Apparatus, Patent Pending, The Small Stakes, Seripop, Hammerpress, The Decoder Ring, Hatch Show Print and many more.

At the media wall in Conlon Hall, images from photographer and cinematographer [Nathan McGarical](#) will be on display through Friday, Dec. 19. Through McGarical's work, viewers will take a trip across the bottom of three continents in this visual diary of wanderings across Argentina, South Africa, India, and Myanmar.

The Conlon Hall Media Wall is a digital HD video display measuring six feet by 10 feet that showcases creative work from students, faculty, alumni and regional artists.



***Egyptian Comics* by Clara Wainwright**



"Burmese Standoff" by Nathan McGarical

McGarigal will discuss the work at a wall talk
Thursday, Dec. 4 at 3:30 p.m. inside Conlon Hall.

Faculty Notes

Eric Budd (Economics, History and Political Science) took the university's Model United Nations team to a Model Arab League competition at Northeastern University from Nov. 7-9. The students were representing the nation of the Sudan. Timothy Michalak and Marianne Siede received an Honorable Mention for Best Delegation for their role on the Political Affairs Council.

Archived editions of Fitchburg State University Today can be found online at <http://www.fitchburgstate.edu/offices/administration/public-relations/fitchburg-state-university-today-archive>. For questions about Fitchburg State University Today, contact the Public Relations Office at (978) 665-4694. To submit to Fitchburg State University Today, visit the Public Relations site at www.fitchburgstate.edu/publicrelations and click on [Request for Publicity](#).

[Forward email](#)



This email was sent to mbruun@fitchburgstate.edu by mbruun@fitchburgstate.edu | [Update Profile/Email Address](#) | Rapid removal with [SafeUnsubscribe™](#) | [Privacy Policy](#).



Fitchburg State University | 160 Pearl Street | Fitchburg | MA | 01420