

# Fitchburg State University Today

Oct. 21, 2013 - Vol 4, Issue 4

## In This Issue

- With Honors
- Domestic Violence Awareness Month
- Marathon history
- Promoting mental health
- ALFA Food for Thought lecture series
- Speaker Series resumes
- Third Thursday Film Series
- CenterStage and cultural events
- Win an iPad2

## Quick Links

- [www.fitchburgstate.edu](http://www.fitchburgstate.edu)
- [Public Relations](#)
- [Campus News](#)
- [Campus Calendar](#)
- [Graduate and Continuing Education](#)
- [Fitchburg State in the News](#)

Find us on **Facebook** 



  
Broadcast Yourself



[Join Our Mailing List](#)

## Fitchburg State, public school leaders sign Honors Compact for Fitchburg High School students



President Antonucci, center signs the Honors Compact with Superintendent of Schools Andre Ravenelle, right, while Fitchburg High School Principal Jeremy Roche, left, looks on.

Fitchburg State University and the Fitchburg Public Schools have signed an Honors Compact that will give students enrolled at Fitchburg

High School's Honors Academy priority admission to the university as well as access to university facilities and scholarships.

The compact, endorsed earlier this month by the Fitchburg School Committee, was signed at Hammond Hall last week before an audience including students, faculty and staff from Fitchburg High and Fitchburg State.

"This Honors Compact is a great opportunity to give high-achieving Fitchburg High School students a valuable head start on higher education," said President Antonucci. "We are thrilled at this chance to open more doors of access to students from our own community."

"Of the many partnerships that I have collaborated on with President Antonucci, this is probably one of the finest," said Fitchburg Public Schools Superintendent Andre Ravenelle. "While providing an incredible, unique opportunity for Fitchburg High School students, it raises the bar of student expectation and achievement at FHS. It also provides academic rigor and financial aid to students as they enter Fitchburg State. The enthusiasm with which the planning for this partnership was received at Fitchburg State and Fitchburg High is testimony to the core focus of our two institutions on serving the needs of students."

"The Fitchburg State University and Fitchburg High School Honors Academy Compact is a tremendous example of two schools working together to help students find success," said Fitchburg High School Principal Jeremy Roche. "The partnership is a vote of confidence in the unlimited potential of

the students who are representing Fitchburg High School's Honors Academy. As a school steeped in tradition and history, FHS is thrilled to be a part of this innovative and unprecedented collaboration that will help current and future students pursue their own pathways to success."

Fitchburg High School launched its Honors Academy this fall with more than 50 freshmen students who were selected for admission based on criteria including grades and standardized test scores. Honors Academy students pursue a rigorous program of study.

For more information on the Honors Compact, visit [here](#).

### FAVE, Center for Conflict Studies observe domestic violence awareness month



The university is observing Domestic Violence Awareness Month in October with discussions and other programs designed to raise awareness. [FAVE](#) - Fitchburg Anti-Violence Education - will lead the month's events.

On Monday, Oct. 21, from 3:30 to 5 p.m., FAVE and the Center for Conflict Studies invite the campus community to a discussion of "Blurred Lines? Violence in Relationships." Males are invited to join the discussion in Thompson 202 and females will discuss the issue in Thompson 217. The event will conclude with the two groups coming together for discussion.

Throughout the month of October, FAVE, in collaboration with the YWCA/Battered Women's Resources of Central Massachusetts, will be continuing our efforts to raise awareness about domestic violence.

Members of the campus community are also invited to wear a purple ribbon the week of Oct. 21 in recognition of domestic violence awareness. Ribbons will be available during the week at various locations on campus and many have also been delivered to campus departments and offices.

The campus can also support the mission by visiting [www.purplepurse.com](http://www.purplepurse.com) and entering the code 01144. Each time the code is registered, the YWCA of Central Massachusetts will receive \$5 from the Allstate Foundation.

For more information on the programs, contact FAVE Project Coordinator [Brenda Coleman](#).

### Boston Marathon oral history project launched

#### **MAPPING THE BOSTON MARATHON 2013**

*A crowdsourced history project.*

faculty member - it was personal.

Jewell, pushing her 3-year-old son in a stroller, was close enough to the second explosion to feel the blast and smell the smoke. In the tumultuous days that followed, Jewell turned to her training as a historian in an attempt to make sense of the experience, chronicling the details, locations and conversations that erupted from the chaos.

That has now grown into a "crowdsourced" oral history project, where Jewell - a member of Fitchburg State's Economics, History and Political Science Department faculty - is looking to collect other experiences from that fateful day. [Mapping the Boston Marathon 2013](#) is now live and seeking input from the public.

The Boston Marathon bombing on April 15 was a moment we will never forget, and for historian Katherine Jewell - a Fitchburg State University

The map is a place where anyone who experienced the Boston marathon bombing on April 15, 2013 can record their story. The database and map that the project seeks to build is not limited to those who were injured, or were otherwise near the blast site. Rather, it seeks to establish a collective narrative and sense of how the events spiraled out from the blast sites. Anyone is welcome to add their story to the map. Where were you when you heard about the bombing? How did you find out? How did you react? Did you have friends or family who were running the marathon, or who were present at the site of the bombs?

"This project brings together multiple voices and experience to create a crowdsourced collective history of the events of April 15, 2013," said Jewell, a member of Fitchburg State's Economics, History and Political Science Department faculty. The data recorded will be publicly available and searchable for present and future research. "Together, these stories will not only record the experiences of Bostonians and their friends and family across the country and the world, but will also serve as a place of connection and reflection. We honor the victims of this senseless tragedy, and seek to support those who still struggle with injuries sustained by the bombs. We want to provide broad based documentary evidence that Boston Strong is real, powerful, and meaningful."

For more information, visit <http://crowdsourcedhistory.wordpress.com/>.

### Fitchburg State, SHINE Initiative collaborate for mental health



Fitchburg State University is launching a chapter of the mental health support organization Active Minds, bolstered by a \$7,500 gift from the SHINE Initiative.

Active Minds is the nation's only nonprofit organization dedicated to utilizing the student voice to raise mental health awareness among college students. The organization develops and supports student-run chapters on colleges and university campuses that promote a dialogue around issues of mental health and educate the entire student body about available resources in and around the campus community.

From left: SHINE Initiative Executive Director Paul Richard, Fitchburg State Counseling Services Director Robert Hynes, Fidelity Bank Chairman and CEO Edward F. Manzi and President Antonucci.

Founded in 2004, the SHINE Initiative is a social enterprise inspired and created by the directors and employees of Fidelity Bank, which remains a major benefactor. Its mission is to be a leader in the effort to recognize mental illness in children and young adults as a mainstream health issue. In pursuit of this mission, the SHINE Initiative develops funding and strategic alliances to improve mental health awareness and education, research, programming and public policy.

Fitchburg State's Active Minds chapter will organize events designed to boost awareness and eliminate the stigma surrounding mental health issues. The gift from the SHINE Initiative, partnering with Fidelity Bank, will boost the university's efforts to launch the chapter.

"This project furthers Fitchburg State's commitment to creating a stronger community, both on and off campus," said Fitchburg State University President Robert V. Antonucci. "The SHINE Initiative has been a powerful force in demystifying mental illness and promoting public health, and we are honored to join them in this pursuit."

"The SHINE Initiative is very mindful of the impact of mental illness on young adults, and the

added stressors and challenges that many college students face," said Fidelity Bank Chairman and CEO Edward F. Manzi, who also serves as chairman of the SHINE initiative. "We're very pleased to support Fitchburg State University and applaud its recognition of the importance of the total wellness of its students."

### ALFA Food for Thought lecture series continues this month

Fitchburg State University's Adult Learning in the Fitchburg Area ([ALFA](#)) program continues its fall [Food for Thought](#) lecture series with a discussion of lead and its effects on the environment.



"Learning from Loons: Lead, Health and the Environment," will be presented **Tuesday, Oct. 29** at 2:30 p.m. at Kent Recital Hall in the Conlon Fine Arts Building, 367 North St. Admission is free and open to the public.

Dr. Mark Pokras, associate professor of wildlife medicine, former director of the Tufts Wildlife Clinic and one of the founders of the Tufts Center for Conservation Medicine, will give the lecture.

Lead poisoning is a huge problem for people, wildlife and domestic animals. This presentation will review our knowledge about biological and ecological effects of lead in a wide variety of domestic and wildlife from cows to condors to earthworms. Our current state of knowledge on the toxicity of lead and its behavior in the environment, including the effects on wildlife, humans, and domestic animals will be examined. We will also discuss the importance of bringing together all interest groups to find safe alternatives, to develop new educational and policy initiatives, to eliminate many current uses of lead, and to clean up existing problems.

#### About ALFA

ALFA is a lifelong learning institute that offers courses and activities designed and implemented in coordination with the professional staff at Fitchburg State University. ALFA provides an opportunity for lifelong learners with similar interests to meet in an informal setting and pursue learning for enrichment and personal growth. ALFA is sponsored by the Center for Professional Studies and the Office of Graduate and Continuing Education at Fitchburg State, in collaboration with volunteer representatives of the community.

For more information on the lecture series and the ALFA program, visit their [website](#).

### Faculty speaker series continues Monday, Nov. 4

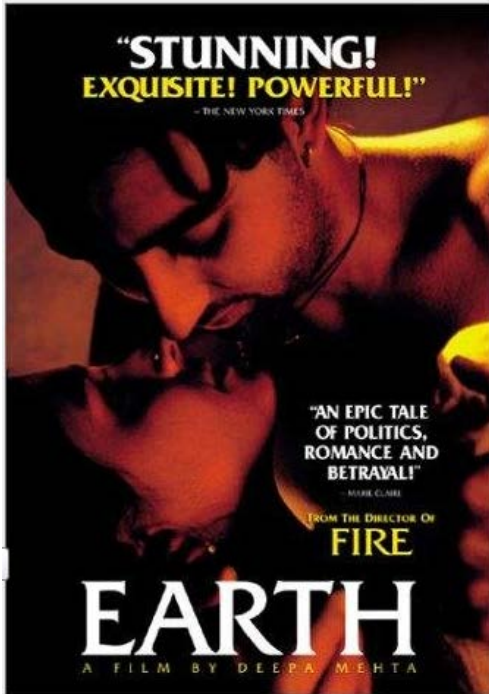
The Fitchburg State Faculty Speaker Series continues Monday, Nov. 4 at the Center for Teaching and Learning in the Amelia Gallucci-Cirio Library with a talk by **John Paul** (Economics, History and Political Science) on "Highlights on Gandhi's Experiment with Nonviolence."

The remaining offerings are:

- On Monday, Dec. 2, **David Svolba** (Humanities) will present "Frankfurt's Account of Moral Responsibility: Two Alleged Counterexamples."
- On Monday, Feb. 3, **Peter Staab** (Mathematics) will present "Representing: Using Linear Algebra Tools in Magic Square."
- On Monday, March 3, **Heather Urbanski** (English Studies) will discuss "Rhetorical Memory and Digital Fandom."
- On Monday, April 7, **Kate Jewell** (Economics, History and Political Science) will discuss "Arsenal of Efficiency: the Army-Navy 'E' Award for Production in World War II."
- On Monday, May 5, **Annamary Consalvo** (English Studies) will present "I'm in a 'Fan Fiction Frame of Mind': Cosplay and the Literate Life of Meredith."



## Third Thursday film series continues this fall



"Earth" (1998) screens on Thursday, Nov. 21

The Third Thursday film series - bridging the Fitchburg State University campus and the city - continues this fall. The community is invited to join Fitchburg State faculty and staff members for free monthly film screenings and discussions at the [Fitchburg Public Library](#).

Each film is presented in the library auditorium, introduced by a member of the university's faculty or staff. The films touch on issues or events that will resonate with today's audiences. A discussion follows each screening.

The remaining fall semester offerings are:

**Nov. 21, 4 p.m.** - John Paul (Economics, History and Political Science) presents *Earth* (1998). It's 1947 and the borderlines between India and Pakistan are being drawn. A young girl bears witness to tragedy as her ayah is caught between the love of two men and the rising tide of political and religious violence.

at a gift shop who can barely stand one another, without realizing that they're falling in love through the post as each other's anonymous pen pal. This holiday treat stars Jimmy Stewart and Margaret Sullavan.

**Dec. 19, 4 p.m.** - Joseph Moser (English Studies) presents *The Shop Around the Corner* (1940). A holiday treat, this film is the story of two employees

## CenterStage and cultural events

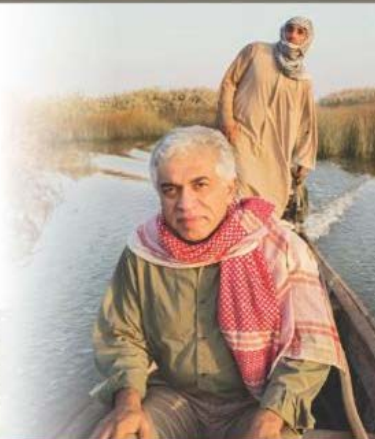


### DOCUMENTARY DOUBLE BILL


<h4>Unfair Game: The Politics of Poaching</h4>	<h4>The New Environmentalists</h4>
--	------------------------------------

**Wednesday, Oct. 23**  
3:30 & 7 PM | Ellis White Lecture Hall  
(Hammond Hall)

Acclaimed documentary filmmaker John Antonelli brings two new works: this year's segment from the PBS series, *The New Environmentalists* and *Unfair Game* which contrasts two approaches to solving the poaching issue in Swaziland and Zambia.

Q&A with the filmmaker to follow.  
Tickets at the door.





[www.fitchburgstate.edu/cultural](http://www.fitchburgstate.edu/cultural)  
978-665-3347 / Th-F: 12:30-3:30 p.m.

Acclaimed documentary filmmaker John Antonelli will return to the Fitchburg State campus on **Wednesday, Oct. 23** to present two new documentary films exploring complex environmental issues in Africa. The films are screened as part of the [CenterStage](#) at Fitchburg State arts and culture series.

*Unfair Game: The Politics of Poaching* and a new entry from the celebrated series "The New Environmentalists" will be screened as a double feature at Ellis White Lecture Hall in Hammond Hall at 3:30 and 7 p.m. The screenings will be followed by a question-and-answer session with Antonelli and members of the Fitchburg State faculty.

Tickets are \$7 for adults and \$5 for students and will be available at the door.

Antonelli has won regional Emmy awards and his work has been featured in prestigious showcases like the Sundance Film Festival. The former Fitchburg State student was back in campus in May when he was awarded an honorary degree in recognition of his contributions to the arts.

The films screening Oct. 23 explore complex environmental issues in Africa.

- *Unfair Game: The Politics of Poaching* is set in Swaziland Zambia and contrasts two approaches to solving the poaching issue. Can wildlife conservation efforts go too far? Is killing people ever a just punishment for hunting wild animals? This feature length documentary explores what happens when measures to protect wildlife are in conflict with indigenous peoples' land rights, human rights and their very survival.
- *The New Environmentalists* has been running for 10 years, with episodes from the series shown on PBS and the Sundance Channel, as well as film festivals around the world including Barcelona, New Delhi, Palermo, Lisbon, New Zealand, Seoul and Boston.

**Falcon Theater Company presents "LYLH" Oct. 22-27**



The Falcon Theater Company this week presents "LYLH," written by and starring Fitchburg State senior Thomas Karner. "LYLH" will be performed Tuesday, Oct. 22 through Saturday, Oct. 26 at 7 p.m. at Percival Auditorium, with a matinee at 2 p.m. Sunday, Oct. 27. Tickets are \$3, available at the door. All proceeds from the show will be donated to cancer research.

"It's a show about finding genuine happiness through our lowest moments," said Karner. "It's a very playful show with a very serious message. It's a look into our own minds."

The one-man show, inspired by Karner's own life experiences, features the actor playing seven characters, each representing different emotional states in the character's journey. Six of the roles are played on screens built into the set, with Karner interacting with all of them on stage.

"LYLH" is directed by Fitchburg State student Matthew Rindini.

## ***Canti e Cantici***

The community is invited to experience the life and poetry of St. Francis of Assisi through a series of workshops, dramatic readings and lectures at Fitchburg State University that will culminate later this fall in a recital with soprano Maria Ferrante and ensemble.

The events, sponsored by the Center for Italian Culture at Fitchburg State, are free and open to the public.

"*Canti e Cantici: Experiencing the Poetry and Life of St. Francis of Assisi*" begins with a poetry workshop on **Wednesday, Oct. 23 at 9:30 a.m.** in Ellis White Lecture Hall in Hammond Hall, 160 Pearl St., Professor Rala Diakite will lead a project-based workshop in which participants explore St. Francis' exquisite poetry through dramatic readings and translation. Participants will also begin their own poem in English or Italian.

The events continue on **Wednesday, Oct. 30 at 11 a.m.** in Kent Recital Hall in the Conlon Fine Arts Building, 367 North St. "The Poetry of St. Francis and Its Afterlife in Literature, Music, Art and Film" will be explored through a multidisciplinary talk by Prof. Diakite, exploring the poetry and its resonance on the arts across the centuries.



Faculty member Michele Caniato and celebrated soprano Maria Ferrante will hold two workshops on **Wednesday, Nov. 20 at 2 and 3:30 p.m.** at Kent Recital Hall. The workshops will demonstrate singing techniques, provide an overview of the compositional process, and discuss collaboration among musicians and recital preparation.

The lectures and workshops set the stage for the "*Canti e Cantici 2013*" concert on **Thursday, Nov. 21 at 7:30 p.m.** in Kent Recital Hall in the Conlon Fine Arts Building, featuring music by Donizetti, Rossini, Puccini, Verdi, and the premiere performance of "Fiori Francescani" composed by Caniato and sung in Italian by Ferrante and mezzo-soprano Daniela Tomic, tenor Sean Lair, bass Miles Rind, accompanied by pianist Pei-yeh Tsai, clarinetist Monica Duncan, violinist Klaudia Szlachta, and cellist Hyun-ji Kwon.

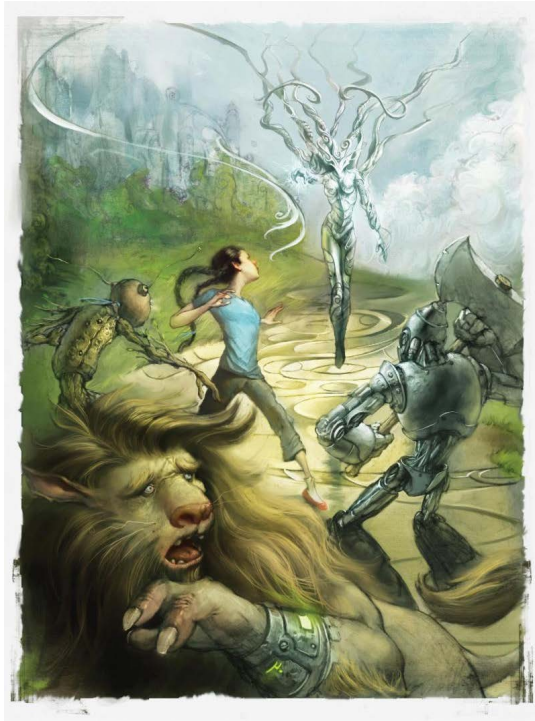
The concert on Nov. 21 will be preceded at 6:30 p.m. by a panel discussion with performers and composer.

### **In the Gallery at Sanders**

The [CenterStage](#) at Fitchburg State University arts and culture series welcomes the work of Britt Snyder for the exhibit "Game Design and Other Art" running through Wednesday, Oct. 23 in the Gallery at Sanders, 300 Highland Ave. Admission is free.



Snyder works as a character modeler and concept artist in the field of video game development and as a professor in Worcester Polytechnic University's Interactive Media and Game Development program. Video game development is a growing industry tied to tradition while looking to the future. Creation of immersive worlds and believable characters to engage the player are needed for the experience in this new form of interactive storytelling. Through his painting and computer-generated artwork, Snyder is navigating this emerging art movement finding balance between personal statement and collaborative development.



Win an iPad2

*Like us*  
and  
enter to win  
**AN IPAD 2!**

Visit our [Facebook Page](#) to see how you can enter to win a FREE iPad2. No purchase necessary.

Archived editions of Fitchburg State University Today can be found online at <http://www.fitchburgstate.edu/offices/administration/public-relations/fitchburg-state-university-today-archive>. For questions about Fitchburg State University Today, contact the Public



Relations Office at (978) 665-4694. To submit to Fitchburg State University Today, visit the Public Relations site at [www.fitchburgstate.edu/publicrelations](http://www.fitchburgstate.edu/publicrelations) and click on [Request for Publicity](#).

[Forward email](#)



This email was sent to mbruun@fitchburgstate.edu by [mbruun@fitchburgstate.edu](mailto:mbruun@fitchburgstate.edu) | [Update Profile/Email Address](#) | Instant removal with [SafeUnsubscribe™](#) | [Privacy Policy](#).

Fitchburg State University | 160 Pearl Street | Fitchburg | MA | 01420