

Fitchburg State University Today

Nov. 4, 2013 - Vol 4, Issue 5

In This Issue

Chemistry major approved

Open forums Nov. 5

International Month

Falcon Theater presents "The Laramie Project"

Sigma Pi to sleep out for homeless

Third Thursday Film Series

CenterStage and cultural events

Win an iPad

Faculty Notes

Quick Links

www.fitchburgstate.edu

[Public Relations](#)

[Campus News](#)

[Campus Calendar](#)

[Graduate and Continuing Education](#)

[Fitchburg State in the News](#)

Find us on Facebook 




Broadcast Yourself



[Join Our Mailing List](#)

BHE approves new chemistry major



Fitchburg State University will launch a new chemistry major in 2014 after a unanimous vote by the state Board of Higher Education. The board met Tuesday, Oct. 29 at Mount Wachusett Community College in Gardner.

The new major has been in development for years and was approved by the university's own board of trustees in April 2013. Students may begin matriculating in the major in fall 2014, and the university will be hiring additional faculty members for the program of study.

"The chemistry major comes at an opportune time for Fitchburg State University, as we near the completion of our \$57 million science center construction and renovation," Fitchburg state President Antonucci said. "The new major will allow us to prepare students for a growing and vital sector of the state's economy."

"The chemistry degree will be a great complement to the new science center," said Margaret Hoey, chairman of the university's Biology/Chemistry Department. "We have planned for this while designing the chemistry labs and the facilities will be able to support the program into the foreseeable future. Chemistry has seen unprecedented interest among all the state universities, and we expect the same kind of growth into the future."

The new, 55,000-square-foot laboratory wing of the science center opened this summer and work is ahead of schedule for the renovation of the existing Condike Science Building, which will reopen next year.

The university has offered chemistry courses for decades, but it was discontinued as a major in the 1990s. The proposal to reintroduce the major has been years in development by faculty members and administrators and was designed to support the university's efforts to prepare students to meet the workforce needs of Massachusetts.

Massachusetts employers are looking for well-trained individuals in biotechnology, chemical, and pharmaceutical firms, and as high school teachers. Graduates of Fitchburg State's new chemistry program will be prepared to assume many of these positions.

The demand for life sciences workers in the state is expected to grow nearly 45 percent faster than for workers in the state economy as a whole, while occupations in the life sciences cluster are expected to grow at a 1.3 percent annual rate between 2006 and 2014, according to the Life Science Talent Initiative (LSTI). LSTI also reports that almost 80 percent of the new life sciences jobs in Massachusetts will require, at minimum, a four-year degree. Other industry watchers predict similarly growing needs for trained chemists in the state, and Fitchburg State's program will help local students fill that void.

For more information on the program, click [here](#).

President hosts open forums Tuesday, Nov. 5

President Antonucci will hold a pair of campus forums on **Tuesday, Nov. 5**, at 10 a.m. and 3:30 p.m. in Hammond Hall's Ellis White Lecture Hall. The president will provide updates on several topics and, as always, entertain questions from the audience.

International Month observed in November



Fitchburg State University will celebrate International Month in November with lectures, film screenings and celebrations of the campus community's multicultural heritage. All of the events are free and open to the public.

The festivities start **Monday, Nov. 4**, with a celebration of Diwali, the Hindu festival of lights, in the main lounge of Hammond Hall from noon to 3 p.m. Also on Nov. 4, Fitchburg State alumnus and current Harvard University teaching fellow Michael Miner will present "Solving the Iranian Riddle: Diplomatic and Security Challenges for American Foreign Policy" from 3:30 to 5 p.m. in Ellis White Lecture Hall in Hammond Hall. Miner's talk is sponsored by the university's Center for Conflict Studies and the International Studies minor.

Students can learn about the opportunities for overseas education at the study abroad fair from noon to 4 p.m. **Wednesday, Nov. 6** at the Hammond main lounge.

At 3:30 p.m. **Thursday, Nov. 7**, there will be a screening and discussion of the Italian film "Seven Beauties" (1975) at 3:30 p.m. in Ellis White Lecture Hall in Hammond Hall. Also Thursday, the university's Latin

American Student Organization and World Integrated Nations chapters will host a dominoes tournament at Hammond Hall.

Students can learn about international careers with an information session at 3:30 p.m.

Wednesday, Nov. 13 at the Miller Oval in Miller Hall. Career Services Director Erin Kelleher and Fitchburg State alumni will lead the session.

The international tapestry of Fitchburg State will be celebrated with "Represent Your Flag" at 4 p.m. **Thursday, Nov. 14** at the Hammond main lounge. The event is sponsored by LASO, the Center for Diversity and Inclusiveness and the Office of International Education.

Faculty member Benjamin Railton (English Studies) will present the lecture "Two Wrongs and a Right: What the Chinese Exclusion Act Can Teach Us about America" at 3:30 p.m. **Monday, Nov. 18** at Ellis White Lecture Hall in Hammond Hall.

There will be an international potluck dinner and poetry slam on from 5:30 to 8:30 p.m.

Wednesday, Nov. 20 at the Falcon Hub in Hammond Hall.

At 4 p.m. **Thursday, Nov. 21**, Faculty member John Paul (Economics, History and Political Science) will introduce the film "Earth" (1998) and lead a post-screening discussion at the [Fitchburg Public Library](#), 610 Main St. The film is presented as part of the university and library's Third Thursday film series. Admission is free. Also on Nov. 21, there will be Indian cultural performances starting at 7 p.m. in Percival Auditorium in Percival Hall.

The month's events conclude **Monday, Nov. 25**, first with a lecture at 12:30 p.m. by faculty member John Paul entitled "Highlights on Gandhi's Experiment with Non-Violence" at the Center for Teaching and Learning in the Amelia V. Gallucci-Cirio Library.

Also on **Monday, Nov. 25**, the university's Humanities Department and World Music Studies will host Israeli folk singer Shuly Nathan at 3:30 p.m. The concert will take place in Kent Recital Hall in the Conlon Fine Arts Building, 367 North St. Admission is free. As a beloved national singer, Nathan is known to have a warm, loving contact with her audiences, having people join her in singing and enjoy her wonderful storytelling about the songs and their bond to the rising of a new nation of Israel.

The final event of International Month will be a talk by faculty member Luis Rosero (Economics, History and Political Science) on "Protecting Against Financial Crisis: The Effectiveness of International Reserves in the Latin American Case" at 3:30 p.m. **Monday, Nov. 25** in Ellis White Lecture Hall in Hammond Hall.

For more information on the International Month events, contact Professor [Eric Budd](#).

Falcon Theater Company presents "The Laramie Project" in November



Matthew Shepard

The Falcon Theater Company, Fitchburg State University's student-run theater club, will present the celebrated play "The Laramie Project" at Percival Auditorium in Percival Hall, 254 Highland Ave., from **Thursday, Nov. 7 through Sunday, Nov. 10**. Admission is free but contributions will be accepted at the door.

"The Laramie Project" was inspired by the reaction to the 1998 beating murder of gay college student Matthew Shepard in Laramie, Wyo.

"This show captures the feeling of the town as they deal with the onslaught of media and stereotypes while also relaying the true story of Matthew Shepard," said Fitchburg State student Kelly Quinn, who is directing the show.

"Matthew Shepard was beaten into critical condition and

eventually died from the injuries he sustained on October 12, 1998. Fifteen years later, I hope that you join us in remembering him, the town of Laramie, and all its residents."

Performances will be held at 7:30 p.m. Thursday, Nov. 7, Friday, Nov. 8 and Saturday, Nov. 9, with a matinee at 2:30 p.m. Sunday, Nov. 10.

Cast members include Kenny Clancy, Teresa Cortes, Mike Daniel, Mary Darling, Shaun Downey, Tori Fair, Rebekah Sage Harris, Merrick Henry, Shelby Kolick, Jack Low, Chris Masih, Jennifer Shubitowski and Sam Witherow. The producer is Libby Taylor and technical director is Brendan Wilkins.

Sigma Pi brothers to Sleep Out for Homeless on Nov. 14

For the 20th year, brothers from the Sigma Pi fraternity at Fitchburg State University will be sleeping outdoors to raise awareness and funds for an important cause.

The "Sleep Out for the Homeless" will be held from 7 p.m. **Thursday, Nov. 14** to 7 a.m. Friday, Nov. 15. All proceeds raised from the event will be donated to Our Father's House, a homeless shelter in the city of Fitchburg.

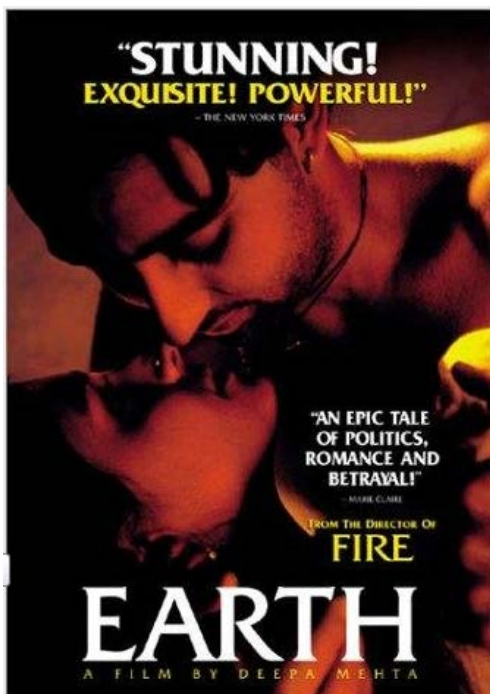
This year's event will mark the fraternity's 20th sleep-out. Members of the local chapter, who will invite brothers from other Sigma Pi chapters, will spend the night on the quad in cardboard boxes. They hope to raise at least \$1,000 for Our Father's House.



The 2011 Sleep Out.

For more information, contact Sigma Pi treasurer Joshua Page at jpage17@student.fitchburgstate.edu.

Third Thursday film series continues this fall



The Third Thursday film series - bridging the Fitchburg State University campus and the city - continues this fall. The community is invited to join Fitchburg State faculty and staff members for free monthly film screenings and discussions at the [Fitchburg Public Library](#), 610 Main St.

Each film is presented in the library auditorium, introduced by a member of the university's faculty or staff. The films touch on issues or events that will resonate with today's audiences. A discussion follows each screening.

The remaining fall semester offerings are:

Nov. 21, 4 p.m. - John Paul (Economics, History and Political Science) presents *Earth* (1998). It's 1947 and the borderlines between India and Pakistan are being drawn. A young girl bears witness to tragedy as her ayah is caught between the love of two men and the rising tide of political and religious violence.

"Earth" (1998) screens on Thursday, Nov. 21

Dec. 19, 4 p.m. - Joseph Moser (English Studies) presents *The Shop Around the Corner* (1940). A holiday treat, this film is the story of two employees

at a gift shop who can barely stand one another, without realizing that they're falling in love through the post as each other's anonymous pen pal. This holiday treat stars Jimmy Stewart and Margaret Sullavan.

CenterStage and cultural events

Award-winning photography and paintings that make us rethink the world around us are on display this fall at Fitchburg State University. The work is being shown as part of the [CenterStage](#) at Fitchburg State arts and culture series.



Now showing on the Conlon Media Wall at Conlon Hall, 316 Highland Ave., is "Passage of Time" by

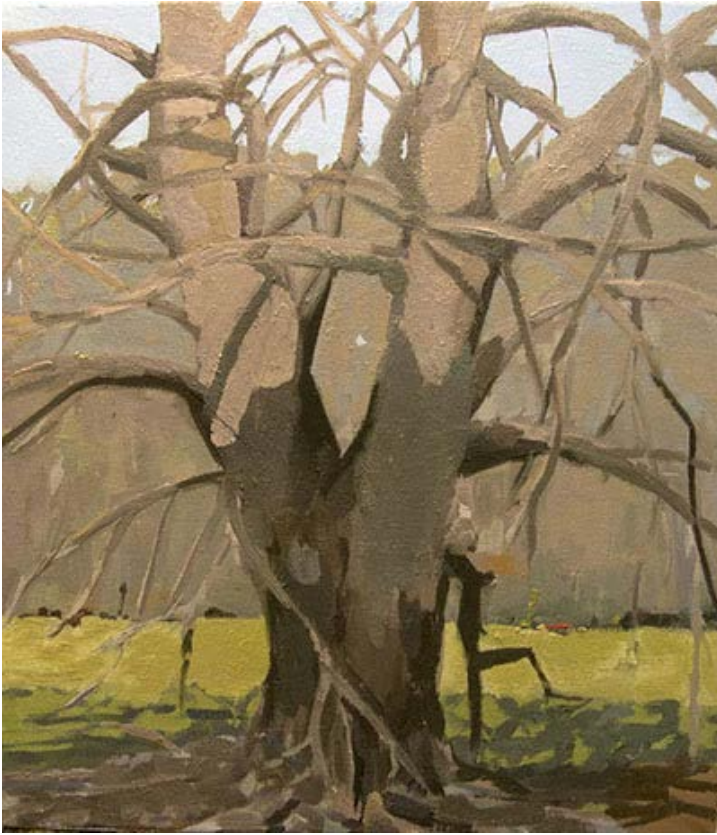
photographer and Fitchburg State alumnus Adoniram Sides. Sides' photography is focused on representing the passage of time and the patterns found therein. One of his images was given an honorable mention this fall at the 8th annual Black and White Spider Awards and another piece in the exhibit was nominated for the honor in 2012. The Black and White Spider Awards is the leading international award honoring black and white photography. The globally webcast awards competition reaches 154 countries.

The photography of Adoniram Sides is on the Conlon Media Wall.

There will be a meet the artist talk with Sides on Wednesday, Nov. 6 at 3:30 p.m. The work will remain on the media wall through Nov. 13.

In the Gallery at Sanders, inside the Sanders Administration Building at 300 Highland Ave., the work of artist Nancy McCarthy will be on display from Wednesday, Nov. 13 through Wednesday, Dec. 18.

"My current paintings are the result of slow, meditative studies of the shapes and colors that make up trees," says McCarthy, a faculty member at the Massachusetts College of Art. "This work is about painting as much as it is about trees. The goal is to translate shapes of limbs, foliage and sky that trees are made of. The most important aspect of this work comes with the steadfast looking and analysis required of painting from observation. I see more and understand better how things, in this case trees, are made. It is in this act of



"Spring Beech" by Nancy McCarthy.

discovery, of truly seeing what is in front of my eyes, that I become connected with the spirit of the tree. My attempt to

translate this information becomes the painting. When working well, it is a synthesis of my own energy combined with that of the specific tree. The distinct hue and value of each shape, the speed of the brush, the thickness of the paint, are all decisions made quickly and intuitively; I am not thinking but acting in response to what I perceive. It is a balancing act: I am trying not to anticipate, just to move in response to perception. When I am able to do that, the painting is alive, it breathes, and has energy of its own."

McCarthy's exhibit will open with a gallery talk at 4:30 p.m. Wednesday, Nov. 13 in the gallery. Admission is free.

For more information, visit www.fitchburgstate.edu/cultural.

Israeli folk singer Shuly Nathan performs Nov. 25

The Fitchburg State University Humanities Department and its world music studies program will present a performance on **Monday, Nov. 25** at 3:30 p.m. by celebrated Israeli folk singer Shuly Nathan. The performance will be held in Kent Recital Hall in the Conlon Fine Arts Building. Admission is free.

As a beloved national singer, Nathan is known to have a warm, loving contact with her audiences, having people join her in singing and enjoy her wonderful storytelling about the songs and their bond to the rising of a new nation of Israel. Members from many religious traditions will find her stories to be

heartwarming and her songs eloquent.

Her fame came overnight in 1967, when songwriter and composer Naomi Shemer selected her to sing a new song about Jerusalem commissioned by then-Mayor Teddy Kollek. The song, "Jerusalem of Gold," became the hymn and prayer of the Arab-Israeli Six-Day War, and endures in that country and has been translated into 40 languages across the globe.

Nathan annually tours the U.S., Canada and Europe, and has performed in Japan, Australia, Central America and New Zealand.



Shuly Nathan performs Nov. 25.

Win an iPad2

Like us
and
enter to win
AN IPAD 2!

An iPad 2 is shown against a yellow background. The screen displays the iOS home screen with various app icons including Calendar (showing 27), Photos, App Store, Settings, Safari, and others. The screen has a water droplet effect.

Visit our [Facebook Page](#) to see how you can enter to win a FREE iPad2. No purchase necessary.

Faculty Notes

Linda McKay (Nursing) presented LPN to BS in Nursing: The ABCs of Program Development at the National League for Nursing Education Summit in Washington D.C. on Sept. 21. The presentation focused on her work, in collaboration with three LPN programs and Worcester State University to develop and implement two university-based bridge programs, which grant Licensed Practical Nurses (LPNs) advanced placement credits for their LPN education. These students are then assimilated into the generic nursing major at both universities. The development and implementation of this track was made possible through grants from the Greater Worcester Community/Fairlawn Foundation and the Massachusetts Department of Higher Education.

Archived editions of Fitchburg State University Today can be found online at <http://www.fitchburgstate.edu/offices/administration/public-relations/fitchburg-state-university-today-archive>. For questions about Fitchburg State University Today, contact the Public Relations Office at (978) 665-4694. To submit to Fitchburg State University Today, visit the Public Relations site at www.fitchburgstate.edu/publicrelations and click on [Request for Publicity](#).

[Forward email](#)



Try it FREE today.

This email was sent to mbruun@fitchburgstate.edu by mbruun@fitchburgstate.edu | [Update Profile/Email Address](#) | Instant removal with [SafeUnsubscribe™](#) | [Privacy Policy](#).

Fitchburg State University | 160 Pearl Street | Fitchburg | MA | 01420