

# Fitchburg State University Today

Nov. 18, 2013 - Vol 4, Issue 6

## In This Issue

International Month continues

Communications Media lecture series opens

Favre, Hynes make presentation

Moot Court tournament returns

Students all business at competition

Third Thursday Film Series

CenterStage and cultural events

Faculty Notes

## Quick Links

[www.fitchburgstate.edu](http://www.fitchburgstate.edu)

[Public Relations](#)

[Campus News](#)

[Campus Calendar](#)

[Graduate and Continuing Education](#)

[Fitchburg State in the News](#)

Find us on Facebook 



  
Broadcast Yourself



[Join Our Mailing List](#)

## International Month continues



The campus celebrated Diwali, the Hindu Festival of Lights, on Nov. 4.

Fitchburg State University continues its celebration of International Month in November with lectures, film screenings and celebrations of the campus community's multicultural heritage. All of the events are free and open to the public.

Faculty member Benjamin Railton (English Studies) will present the lecture "Two Wrongs and a Right: What the Chinese Exclusion Act Can Teach Us about America" at 3:30 p.m. **Monday, Nov. 18** at Ellis White Lecture Hall in Hammond Hall.

There will be an international potluck dinner and poetry slam on from 5:30 to 8:30 p.m. **Wednesday, Nov. 20** at the Falcon Hub in Hammond Hall. Visitors are invited to bring a dish from around the world to the dinner. For the poetry slam, guests are invited to bring a poem or piece of prose by yourself or a favorite author in any language except English. Selections may be introduced in English, but will be recited, performed or read for up to five minutes. Presenters are asked to make a copy with the text and English translation and send it to Rala Diakite at [rdiakite@fitchburgstate.edu](mailto:rdiakite@fitchburgstate.edu) two days in advance.

At 4 p.m. **Thursday, Nov. 21**, Faculty member John Paul (Economics, History and Political Science) will introduce the film "Earth" (1998) and lead a post-screening discussion at the [Fitchburg Public Library](#), 610 Main St. The film is presented as part of the university and library's Third Thursday film series.

Admission is free. Also on Nov. 21, there will be Indian cultural performances starting at 7 p.m. in Percival Auditorium in Percival Hall.

The month's events conclude **Monday, Nov. 25**, first with a lecture at 12:30 p.m. by faculty member John Paul entitled "Highlights on Gandhi's Experiment with Non-Violence" at the Center for Teaching and Learning in the Amelia V. Gallucci-Cirio Library.

Also on **Monday, Nov. 25**, the university's Humanities Department and World Music Studies will host Israeli folk singer Shuly Nathan at 3:30 p.m. The concert will take place in Kent Recital Hall in the Conlon Fine Arts Building, 367 North St. Admission is free. As a beloved national singer, Nathan is known to have a warm, loving contact with her audiences, having people join her in singing and enjoy her wonderful storytelling about the songs and their bond to the rising of a new nation of Israel.

The final event of International Month will be a talk by faculty member Luis Rosero (Economics, History and Political Science) on "Protecting Against Financial Crisis: The Effectiveness of International Reserves in the Latin American Case" at 3:30 p.m. **Monday, Nov. 25** in Ellis White Lecture Hall in Hammond Hall.

For more information on the International Month events, contact Professor [Eric Budd](#).

### Communications Media lecture series begins this week



"Text Rain" by George Fifiield

Fitchburg State will launch the third year of its Communications Media Lecture Series on **Wednesday, Nov. 20**, with a presentation on "The Past and Future of Interactive New Media" by cyber artist George Fifiield. The presentation, from 3:30 to 5 p.m. at Ellis White Lecture Hall in Hammond Hall is free and open to the public.

In the future, virtual and augmented reality will be making a comeback in digital and cyberarts media. Starting the early 1980s, new forms of

interactive art came into being, some specifically designed for the white box of the gallery, some like Virtual Reality to be experienced in the mind. This new media explored numerous themes, including ideas of expanded cinema and evolutionary simulation. In the mid-1990s new work was developed that sought to eliminate the mechanical interface and replace it with an interface we are more familiar with: our own body.

Fifield is a new media curator, a writer about art and technology and teacher. He is the founding director of Boston Cyberarts Inc., a nonprofit arts organization, which has produced a number of projects in the Boston area including the Boston Cyberarts Gallery and Art on the Marquee, which puts interactive media and motion graphics media art on the 80-foot video marquee in front of the Boston Convention Center. He is also an independent curator of new media with numerous projects here and abroad. His most recent exhibitions were "Drawing with Code: Works from the collection of Anne and Michael Spalter" at the deCordova Sculpture Park and Museum in January 2011 and "Act React: Interactive Installation Art at the Milwaukee Art Museum" in October 2008. For 13 years until 2006, Fifield was curator of new media at the deCordova Sculpture Park and Museum in Lincoln. He is adjunct faculty at Rhode Island School of Design's Digital + Media graduate program and teaches at Massachusetts College of Art.

The Graphic Design Lecture Series, organized by Professor Stephen Goldstein, is presented with support from Fitchburg State's Ruth Butler Grant.

The series will continue in January with a presentation by Liz Resnick, chair of the Graphic Design Department at the Massachusetts College of Art, on "Propaganda and Protest Posters: A Select

History of Civic Engagement by Artists." Resnick's lecture will be given **Thursday, Jan. 30** at 3:30 p.m. in Ellis White Lecture Hall.

In February, acclaimed New England filmmaker Jay Craven (whose credits include Where the Rivers Flow North, A Stranger in the Kingdom and the 2004 Emmy-winning public television comedy series Windy Acres) who will discuss "Turning Celluloid Dreams into (Digital) Reality." Craven's presentation will be given **Wednesday, Feb. 26** at 3:30 p.m. in Percival Auditorium in Percival Hall, 254 Highland Ave.

The series concludes in April, when photographer Lou Jones presents "Designing Your Creative Life." The profession of photography can be embraced for commercial or aesthetic reasons. A person can take pictures for art or money. But what if you could use photography as a vehicle on which to build your creative life? This talk will tackle the task of giving your life political, social, economic, and personal directions, i.e. how to overcome your fears & initiate diverse and provocative creative projects with photography as the core. Jones' presentation will be given at 3:30 p.m. **Wednesday, April 9** at Ellis White Lecture Hall.

### Favre, Hynes make presentation on male reproductive health

Martha Favre (director of Student Health Services) and Robert Hynes (director of Counseling Services) presented at the 141st Annual Meeting of the American Public Health Association on Nov. 6 in Boston. The two were co-authors on a project entitled "Integrating male reproductive health services: one university health clinic story."

The presentation marked the culmination of a five-year project at Fitchburg State. For more information on the project, visit [here](#).

### Moot Court tournament returns to campus Nov. 22-23

Fitchburg State University will once again host the American Collegiate Moot Court Competition regional tournament this fall, bringing more than 64 teams from 19 colleges and universities up and down the eastern seaboard to Fitchburg.

This will be the largest undergraduate moot court competition ever held on a U.S.



college campus.

The regional competition will kick off at 1 p.m. Friday, Nov. 22 at Hammond Hall, with

teams of students making 20-minute arguments before panels of local judges, lawyers and professors across campus. Among the legal luminaries hearing the arguments this year will be U.S. District Judge Timothy S. Hillman of Fitchburg, District Court Judge Margaret Guzman, Juvenile Court Judge Anthony Marotta, and retired District Court Judge Patrick Fox.

The regional tournament's final rounds on Saturday, Nov. 23 will determine which students participate in the national competition in January at the Sandra Day O'Connor School of Law at Arizona State University.

In addition to Fitchburg State, the institutions competing this week include: University of Connecticut, Duke University, Western Connecticut University, Suffolk University, Elms College, State University of New York (SUNY) Albany, Williams College, the College of New Jersey, Bentley University, Merrimack College, Holy Cross, Patrick Henry College, SUNY Brockport and Hunter College.

Participants in the competition argue different sides of a hypothetical legal case before a panel of judges. This year's case will focus on whether the warrantless tracking of a defendant's location through a cell phone violates the Fourth Amendment of the U.S. Constitution and whether the president exceeded his authority when he ordered the indefinite detention of an American citizen.

Fitchburg State's Moot Court team has a history of strong showings at the regional event, advancing to the national moot court competition 12 consecutive times. The remains the only school in the competition to win national honors at every tournament.

### Fitchburg State students all business at Rhode Island competition

On Friday, Nov.8, Fitchburg State seniors Anthony Hala and Daniel LaFond competed in the Northeast Intercollegiate Sales Competition hosted by Bryant University in Smithfield, R.I. This was the first time that students from Fitchburg State participated at this event.

Students from 11 universities, including Bryant University, University of Connecticut, University of New Hampshire, Southern New Hampshire University, and Plymouth State University, participated in the sales competition. Fitchburg State University was the only college from Massachusetts.

After receiving a call from Bryant University, Assistant Professor Renee Scapparone



Students Daniel LaFond, left, and Anthony Hala, right, with Professor Renee Scapparone.

encouraged her students to join her at this event. Along with Hala and LaFond, Scapparone was joined by seven other students. The students were able to participate in networking sessions, where they were able to speak directly with recruiters for internships and full-time sales positions with industry leaders such as EMC, ADP, Liberty Mutual, and Fidelity Investments, to name a few.

In addition to the networking and recruiting sessions, informational seminars were held throughout the day, as well as the sales competition. From a field of 43 competitors, Hala advanced to the semi-finals with 15 other competitors. One should note that of the 16 semi-finalists, 8 were from Plymouth State University, 6 were from Bryant University, 1 from Southern New Hampshire University, and 1 from Fitchburg State University.

The students were a fine representation of Fitchburg State University. Dr. Scapparone is planning on attending this event next year and is optimistic that more students will accompany her to this event.

### Third Thursday film series continues this fall

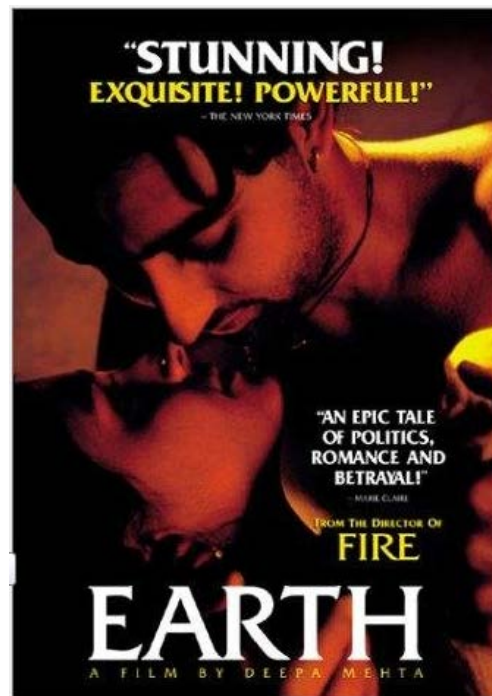
The Third Thursday film series - bridging the Fitchburg State University campus and the city - continues this fall. The community is invited to join Fitchburg State faculty and staff members for free monthly film screenings and discussions at the [Fitchburg Public Library](#), 610 Main St.

Each film is presented in the library auditorium, introduced by a member of the university's faculty or staff. The films touch on issues or events that will resonate with today's audiences. A discussion follows each screening.

The remaining fall semester offerings are:

**Nov. 21, 4 p.m.** - John Paul (Economics, History and Political Science) presents *Earth* (1998). It's 1947 and the borderlines between India and Pakistan are being drawn. A young girl bears witness to tragedy as her ayah is caught between the love of two men and the rising tide of political and religious violence.

**Dec. 19, 4 p.m.** - Joseph Moser (English Studies) presents *The Shop Around the Corner* (1940). A holiday treat, this film is the story of two employees at a gift shop who can barely stand one another, without realizing that they're falling in love through the post as each other's anonymous pen pal. This holiday treat stars Jimmy Stewart and Margaret Sullavan.



"Earth" (1998) screens on Thursday, Nov. 21

### CenterStage and cultural events

#### Fall theater production: Tom Stoppard's *Arcadia*

Fitchburg State University's fall theater production, Tom Stoppard's *Arcadia*, will be presented Tuesday, Nov. 19 through Sunday, Nov. 24 at the McKay Complex, 67 Rindge Road, Fitchburg. Admission is free.

Arcadia is regarded by many as the best play of perhaps the greatest living playwright, Tom Stoppard. One English country house, two moments in time: 1809 and the present. The story revolves around a mystery surrounding Lord Byron. It is a comedy, a love story, and an exploration of the soul. At the center of the play is a celebration of the universal human thirst to "find out" what is going on in order to make the world a better place. Presented by students in the Communications Media and Industrial Technology departments and directed by Professor Richard McElvain.


*Arcadia* will be presented in preview performances at 6 p.m. Tuesday, Nov. 19 and Wednesday, Nov. 20; at 7:30 p.m. Thursday, Nov. 21 through Saturday, Nov. 23; and a matinee at 2 p.m. Sunday, Nov. 24.

Reviewing the play after its debut in 1993, the *Times* of London praised the "perfect marriage of ideas and high comedy," while a critic for London's *Daily Telegraph* raved, "I have never left a play more convinced that I had just witnessed a masterpiece."

#### **In the Gallery at Sanders: "Trees" by Nancy McCarthy**

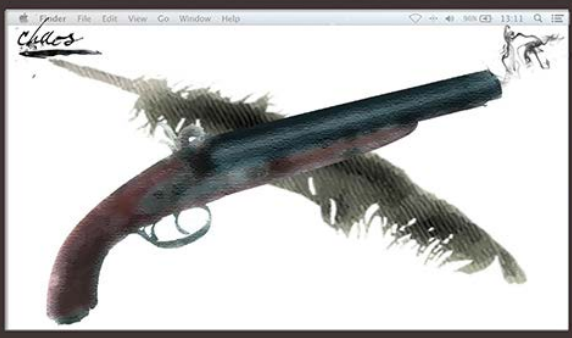
In the Gallery at Sanders, inside the Sanders Administration Building at 300 Highland Ave., the work of artist Nancy McCarthy will be on display through Wednesday, Dec. 18.

"My current paintings are the result of slow, meditative studies of the shapes and colors that make up trees," says McCarthy, a faculty member at the Massachusetts College of Art. "This work is about painting as much as it is about trees. The goal is to translate shapes of limbs, foliage and sky that trees are made of. The most important aspect of this work comes with the steadfast looking and analysis required of painting from observation. I see more and understand better how things, in this case trees, are made. It is in this act of discovery, of truly seeing what

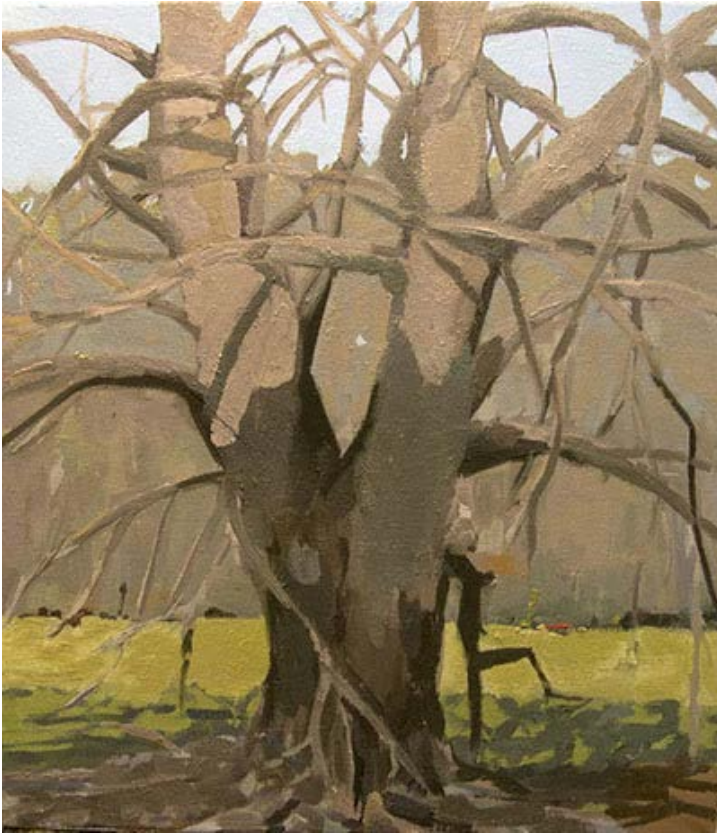
THE COMMUNICATIONS MEDIA AND  
INDUSTRIAL TECHNOLOGY DEPARTMENTS OF  
 FITCHBURG STATE  
UNIVERSITY  
PRESENT

# ARCADIA

BY TOM STOPPARD  
DIRECTED BY RICHARD McELVAIN



Tues., Nov. 19 & Wed. Nov. 20 at 6 pm  
Sun., Nov. 24 at 2 pm  
Thurs., Nov. 21 - Sat. Nov. 23 at 7:30 pm  
McKAY THEATER  
Box Office 978.665.3347  
ADMISSION IS FREE



"Spring Beech" by Nancy McCarthy.

is in front of my eyes, that I become connected with the spirit of the tree. My attempt to translate this information

becomes the painting. When working well, it is a synthesis of my own energy combined with that of the specific tree. The distinct hue and value of each shape, the speed of the brush, the thickness of the paint, are all decisions made quickly and intuitively; I am not thinking but acting in response to what I perceive. It is a balancing act: I am trying not to anticipate, just to move in response to perception. When I am able to do that, the painting is alive, it breathes, and has energy of its own."

For more information, visit [www.fitchburgstate.edu/cultural](http://www.fitchburgstate.edu/cultural).

### **Israeli folk singer Shuly Nathan performs Nov. 25**

The Fitchburg State University Humanities Department and its world music studies program will present a performance on **Monday, Nov. 25** at 3:30 p.m. by celebrated Israeli folk singer Shuly Nathan. The performance will be held in Kent Recital Hall in the Conlon Fine Arts Building. Admission is free.

As a beloved national singer, Nathan is known to have a warm, loving contact with her audiences, having people join her in singing and enjoy her wonderful storytelling about the songs and their bond to the rising of a new nation of Israel. Members from many religious traditions will find her stories to be heartwarming and her songs eloquent.

Her fame came overnight in 1967, when

songwriter and composer Naomi Shemer selected her to sing a new song about Jerusalem commissioned by then-Mayor Teddy Kollek. The song, "Jerusalem of Gold," became the hymn and prayer of the Arab-Israeli Six-Day War, and endures in that country and has been translated into 40 languages across the globe.



Shuly Nathan performs Nov. 25.

Nathan annually tours the U.S., Canada and Europe, and has performed in Japan, Australia, Central America and New Zealand.

### Faculty Notes

**Samuel Tobin** (Communications Media) had his new book *Portable Play in Everyday Life* published by Palgrave Pivot. Despite the fact that the Nintendo DS is one the most popular game systems of all time, theorists have largely ignored it. Here, Tobin argues that the reason for this is that the DS is literally and figuratively beneath notice and not just by game scholars but by its own players as well. Indeed it is the very "everydayness" of the Nintendo DS and of mobile gaming in general that is invisible yet filled with critical potential. *Portable Play in Everyday Life* explores how this everyday device fits into players' homes, commutes and lives. Drawing on discourse analysis and ethnographic methods, Tobin looks at the contexts, constraints and desires that animates and complicates mobile play. This is a significant shift away from examining the fantastic spaces inside of games to looking instead at the real world and lives in which play happens and why sometimes the "good enough" is just right.

**Susan Williams** (Economics, History and Political Science) presented a paper in Litchfield, Conn. at a symposium sponsored by the Litchfield Historical Society on Oct. 28. The program, entitled "Groundbreaking Women: Garden Design and the Colonial Revival," was organized by the Litchfield Historical Society to celebrate the centennial of the Litchfield Garden Club. Williams' paper, "Alice Morse Earle's Old-Time Gardens Reconsidered," was part of a larger effort to examine the ways that women used gardening as a means of extending their concerns and activities from the private, domestic sphere to the public work of civic beautification and conservation.



<http://www.fitchburgstate.edu/offices/administration/public-relations/fitchburg-state-university-today-archive>. For questions about Fitchburg State University Today, contact the Public Relations Office at (978) 665-4694. To submit to Fitchburg State University Today, visit the Public Relations site at [www.fitchburgstate.edu/publicrelations](http://www.fitchburgstate.edu/publicrelations) and click on [Request for Publicity](#).

[Forward email](#)



Try it FREE today.

This email was sent to mbruun@fitchburgstate.edu by [mbruun@fitchburgstate.edu](mailto:mbruun@fitchburgstate.edu) | [Update Profile/Email Address](#) | Instant removal with [SafeUnsubscribe™](#) | [Privacy Policy](#).

Fitchburg State University | 160 Pearl Street | Fitchburg | MA | 01420