

FITCHBURG STATE COLLEGE

**Institutional Factbook
2009**

April 2009

Questions, comments or suggestions regarding the material contained in this Factbook may be addressed to:

**Terrance J. Carroll
Director of Institutional Research
Fitchburg State College
160 Pearl St.
Fitchburg, MA 01420**

**Voice: 978-665-3171
E-mail: tcarroll@fsc.edu**

Table of Contents

Admissions

Admissions Yield	Page 2
New Students - Gender / Ethnicity	Page 3
Math SAT Distribution	Page 4
Verbal SAT Distribution	Page 5
Combined SAT Distribution	Page 6
Top Feeder High Schools	Page 7
Top Feeder Transfer Colleges	Page 8
New Students	Page 9
New Freshmen and Transfers by Major	Page 10

Enrollment

Enrollment - Count / Status / Gender / Ethnicity	Page 13
Enrollment - Headcount / FTE	Page 14
Residence Halls	Page 15
Undergraduate Majors	Page 16
Enrollment - Gender	Page 18
Student Age Distribution	Page 19
Enrollment - Class Standing	Page 20
Annual Student Headcount	Page 21
Annual Credit Hours	Page 22

Table of Contents

Degrees Awarded

Degrees Awarded - Level	Page 24
Degrees Awarded - Gender / Ethnicity	Page 25
Degrees Awarded - Gender	Page 26
Bachelors Degrees Awarded - Race / Ethnicity	Page 27
Masters Degrees Awarded - Race / Ethnicity	Page 28
CAGS Awarded - Race / Ethnicity	Page 29
Degrees Awarded - Program	Page 30
Retention and Graduation Rates	Page 33

Faculty, Administration, and Staff

Full-time Employees - Occupational Classification	Page 35
Full-time Employees - Gender / Race	Page 36
Full-time Faculty - Rank / Gender	Page 37
Full-time Faculty - Rank / Tenure	Page 38

Library

Library Collection	Page 40
--------------------	---------

Table of Contents

College Finances

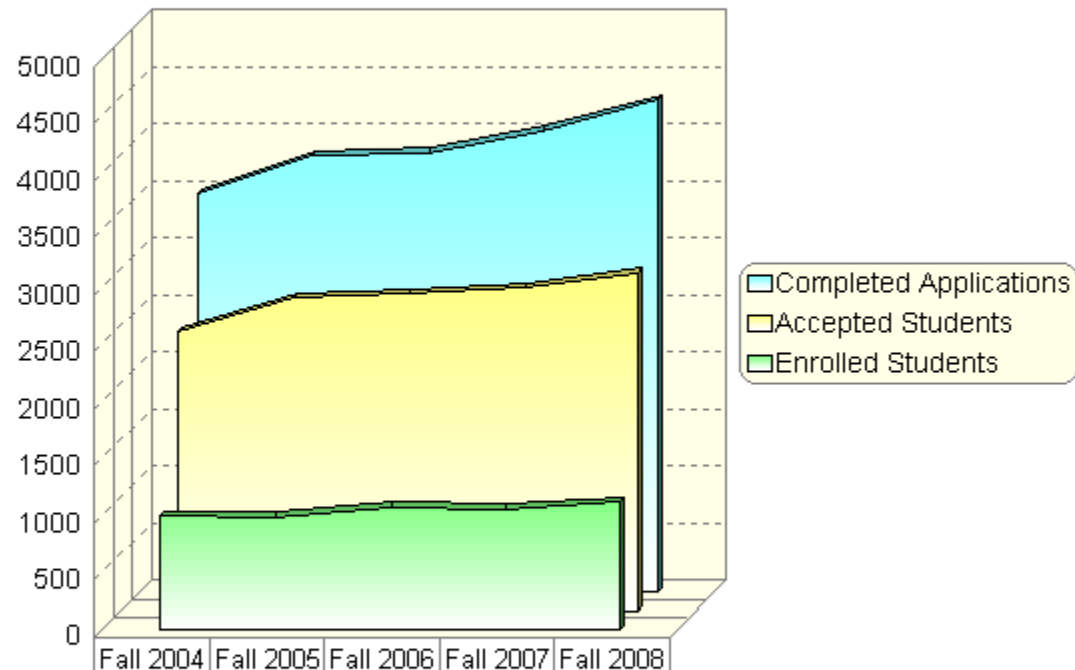
Undergraduate Tuition and Fees	Page 42
College Finances – Revenues	Page 43
College Finances – Expenditures	Page 44
FSC Foundation - Net Assets	Page 45

ADMISSIONS



Admissions Yield

Bachelor Degree Seeking



	Fall 2004	Fall 2005	Fall 2006	Fall 2007	Fall 2008
Completed Applications	3491	3829	3855	4048	4320
Accepted Students	2445	2748	2777	2829	2964
Enrolled Students	1004	990	1075	1062	1121

Source: HEIRS

New Students

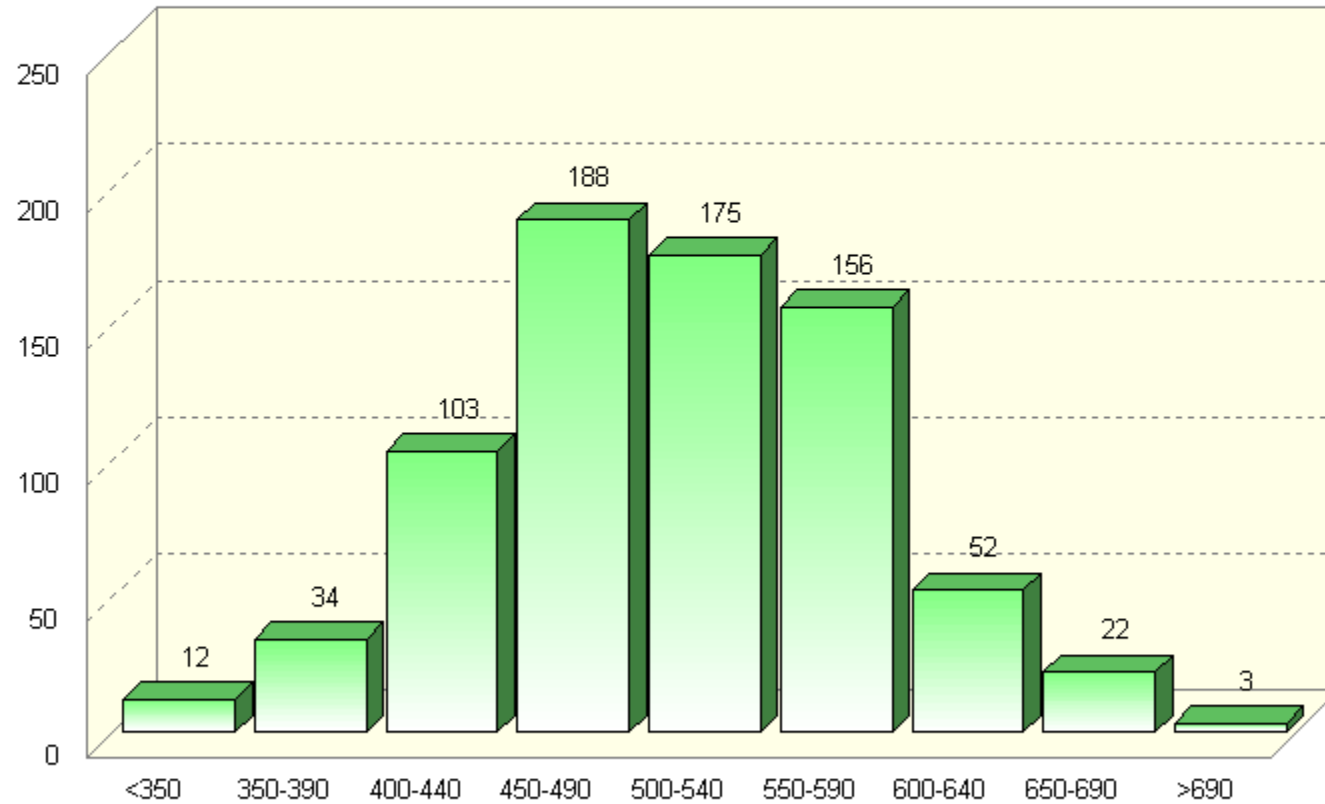
Gender / Ethnicity

Fall 2008	First-time Freshmen			Transfers			All New Students		
	Male	Female	Total	Male	Female	Total	Male	Female	Total
<u>Race / Ethnicity</u>									
Nonresident Alien	0	0	0	1	0	1	1	0	1
Black	11	22	33	6	5	11	17	27	44
Native American	1	0	1	0	0	0	1	0	1
Asian	4	7	11	3	3	6	7	10	17
Hispanic	11	21	32	7	4	11	18	25	43
White	306	351	657	117	163	280	423	514	937
Cape Verdean	0	0	0	0	0	0	0	0	0
Unknown	16	21	37	21	20	41	37	41	78
Total	349	422	771	155	195	350	504	617	1121

Source: HEIRS

Math SAT Distribution

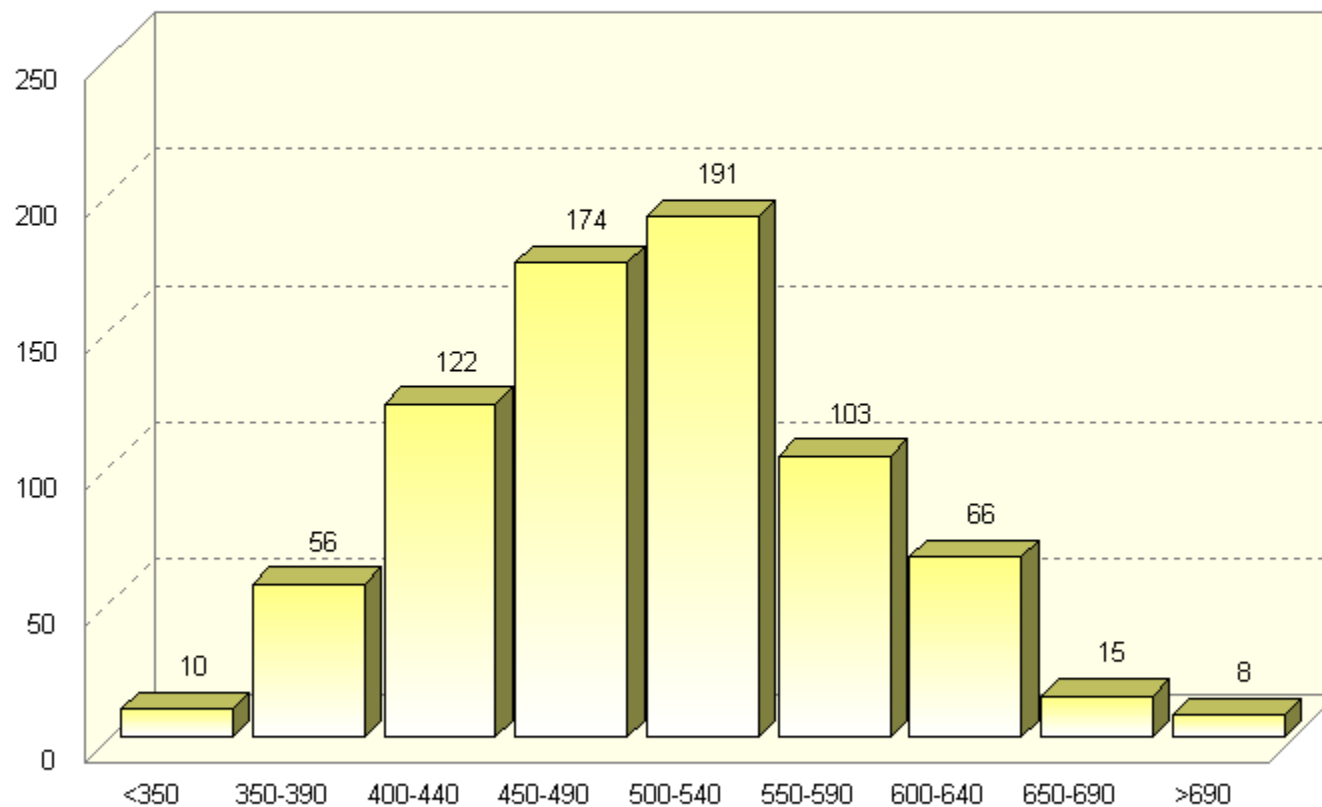
Fall 2008



Source: HEIRS

Verbal SAT Distribution

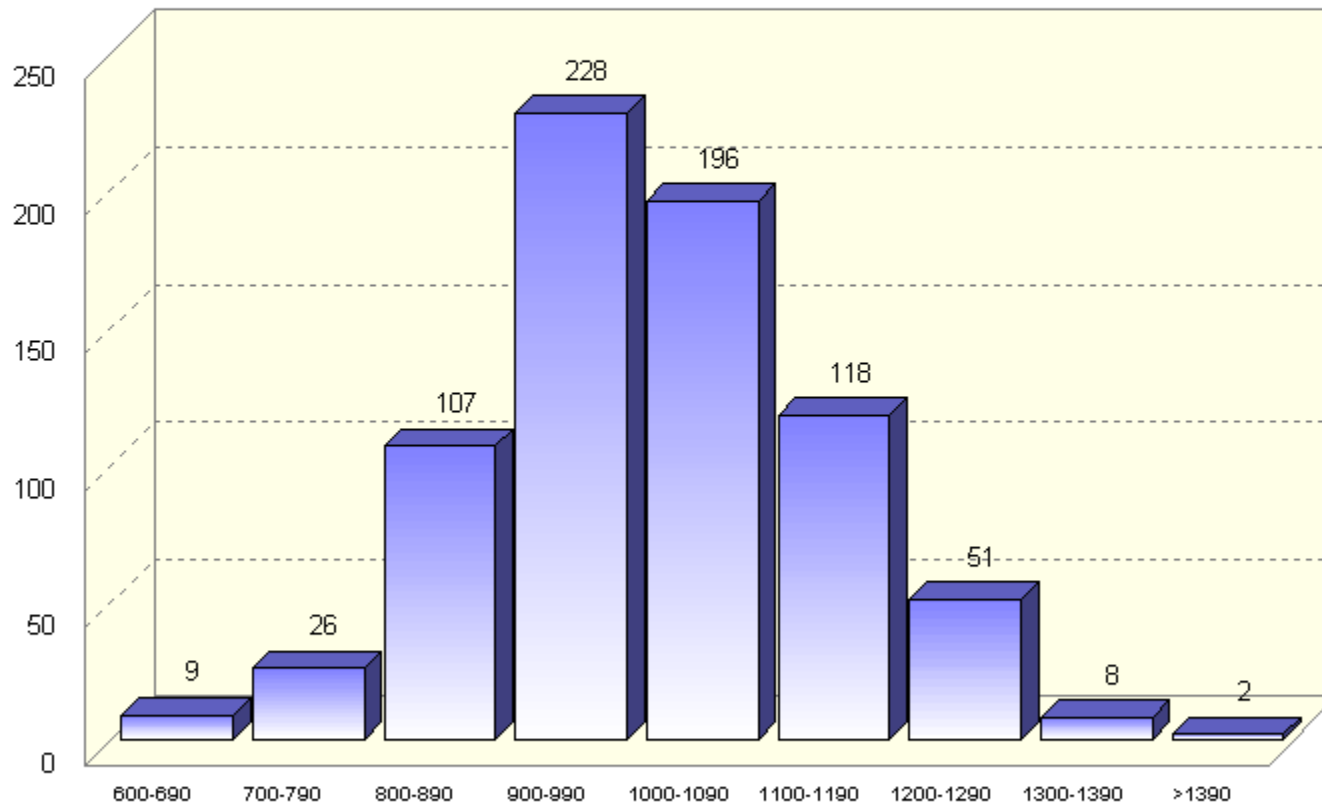
Fall 2008



Source: HEIRS

Combined SAT Distribution

Fall 2008



Source: HEIRS

Top Feeder High Schools

Fall 2008

North Middlesex	35
Leominster	28
Fitchburg	26
Montachusett	20
Lunenburg	18
Oakmont	17
St. Bernard's	15
Lowell	10
Woburn	8
Quabbin	8
Chelmsford	8

Source: HEIRS

Top Feeder Transfer Colleges

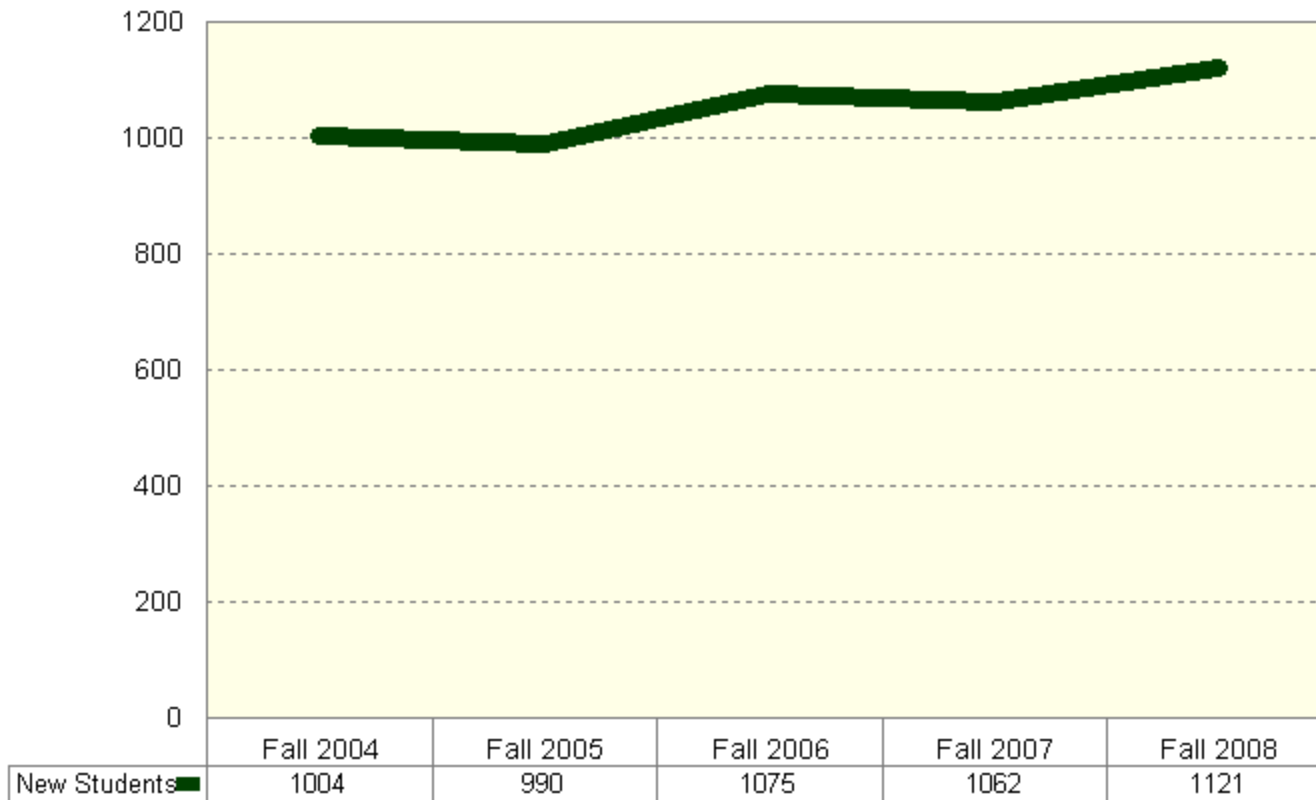
Fall 2008

Mt. Wachusett C.C.	95
Middlesex C.C.	23
No. Essex C.C.	12
UMass Amherst	12
Quinsigamond C.C.	9
Worcester State	9
Westfield State	8
Bristol C.C.	6
Bridgewater State	5
Dean	5

Source: HEIRS

New Students

Freshmen & Transfers



Source: HEIRS

New Freshmen & Transfers

Major 1 at Census Date

	Fall 2004	Fall 2005	Fall 2006	Fall 2007	Fall 2008
Biology	29	32	32	38	43
Business Admin.	123	102	143	135	135
Communications Media	160	156	136	175	174
Comp. Inf. Sys.	9	15	15	11	6
Computer Sci.	20	17	23	16	19
Criminal Justice	56	69	66	54	72
Early Child. Educ.	34	46	56	49	36
Economics	1	0	2	4	1
Elementary Educ.	56	60	71	56	65
English	43	41	36	33	35
Exercise Sci.	23	33	41	39	39
Geo/Earth Sci.	1	1	2	3	5
History	28	22	23	21	29
Continued					

Source: HEIRS

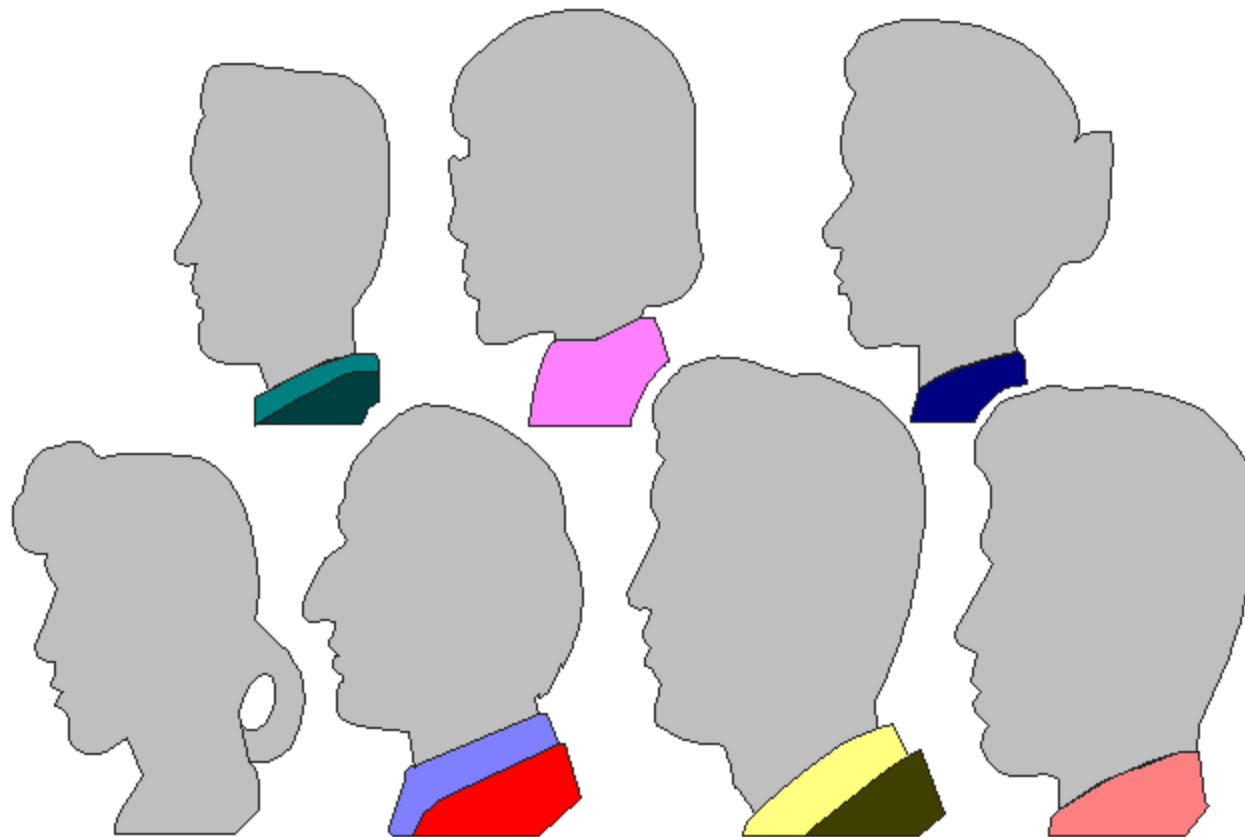
New Freshmen & Transfers

Major 1 at Census Date

	Fall 2004	Fall 2005	Fall 2006	Fall 2007	Fall 2008
Human Services	18	7	7	20	21
Industrial Tech.	70	57	78	75	68
Interdisc. Studies	2	10	5	11	11
Mathematics	15	12	10	10	16
Middle Sch. Educ.	7	5	7	5	10
Nursing	85	75	102	79	101
Political Sci.	5	14	3	11	6
Psychology	45	32	44	39	52
Sociology	7	8	1	5	1
Special Educ.	27	42	32	25	33
Technology Educ.	3	5	7	2	0
Vocational Educ.	5	3	5	5	14
Pre-majors	132	126	128	141	129
Total	1004	990	1075	1062	1121

Source: HEIRS

ENROLLMENT



Enrollment (Day Students)

Count / Status / Gender / Race

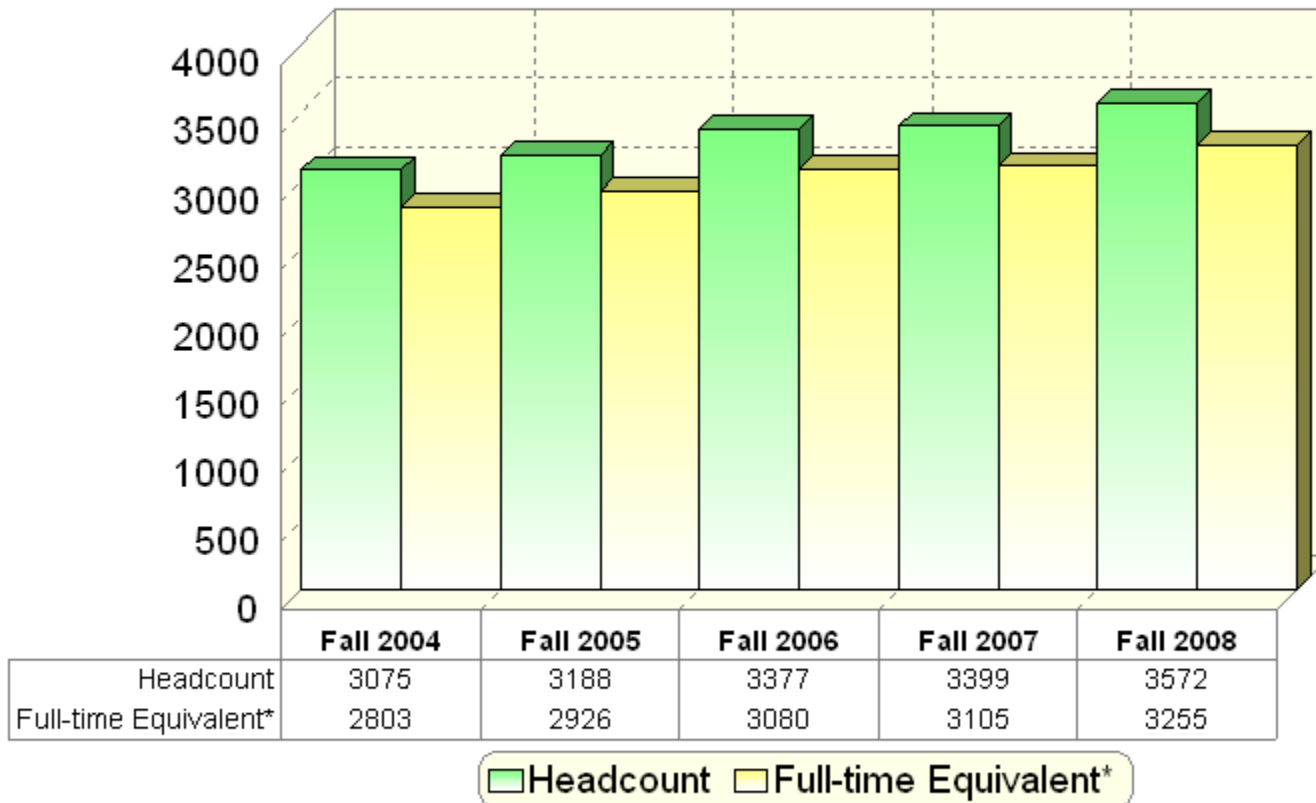
	Fall 2004	Fall 2005	Fall 2006	Fall 2007	Fall 2008
<u>Count</u>					
Headcount	3075	3188	3377	3399	3572
Full-time Equivalent*	2803	2926	3080	3105	3255
<u>Status</u>					
Full-time	2810 91.4%	2940 92.2%	3066 90.8%	3102 91.3%	3202 89.6%
Part-time	265 8.6%	248 7.8%	311 9.2%	297 8.7%	370 10.4%
<u>Gender</u>					
Male	1342 43.6%	1438 45.1%	1527 45.2%	1576 46.4%	1656 46.4%
Female	1733 56.4%	1750 54.9%	1850 54.8%	1823 53.6%	1916 53.6%
<u>Race / Ethnicity</u>					
Native American	5 .2%	8 .3%	10 .3%	10 .3%	10 .3%
Asian	63 2.0%	79 2.5%	77 2.3%	70 2.0%	62 1.7%
Black	78 2.5%	96 3.0%	104 3.1%	108 3.2%	123 3.4%
Hispanic	100 3.3%	99 3.1%	107 3.2%	97 2.9%	115 3.2%
Cape Verdean	9 .3%	10 .3%	7 .2%	7 .2%	3 .1%
White	2581 82.9%	2748 86.2%	2920 86.5%	2802 82.4%	2964 83.0%
Nonresident Alien	25 .8%	21 .7%	18 .5%	20 .6%	9 .3%
Unknown	214 6.9%	127 3.9%	134 3.9%	285 8.4%	286 8.0%

Source: FSC Data Warehouse

*FTE = Total Student Credits Divided by 15

Enrollment (Day Students)

Headcount / Full-time Equivalent*



Residence Halls

Reported Occupancy

	Fall 2004	Fall 2005	Fall 2006	Fall 2007	Fall 2008
Apartments	182	183	186	189	186
Aubuchon Hall	335	335	347	341	344
Herlihy Hall	158	154	161	165	160
Mara Village	315	329	321	354	329
Russell Towers	482	462	502	490	496
Cedar Street	26	28	26	28	28
Total	1498	1491	1543	1567	1543

Source: Mass. State College Building Authority Reports

Undergraduate Majors*

Bachelor's Degree Seeking Day Students

	Fall 2004	Fall 2005	Fall 2006	Fall 2007	Fall 2008
Biology	83	95	108	122	136
Business Admin.	376	384	428	455	462
Communications Media	506	522	552	566	584
Computer Info. Systems	53	43	48	47	40
Computer Science	60	55	62	46	40
Criminal Justice	172	224	228	207	226
Economics	2	5	6	8	13
Early Childhood Education	119	127	120	107	94
Elementary Education	205	190	204	170	169
English	155	167	178	164	161
Exercise Sci.	80	95	117	145	166
Geo/Earth Sci.	4	2	4	8	15
Continued					

Source: FSC Data Warehouse

*Includes second majors

Undergraduate Majors*

Bachelor's Degree Seeking Day Students

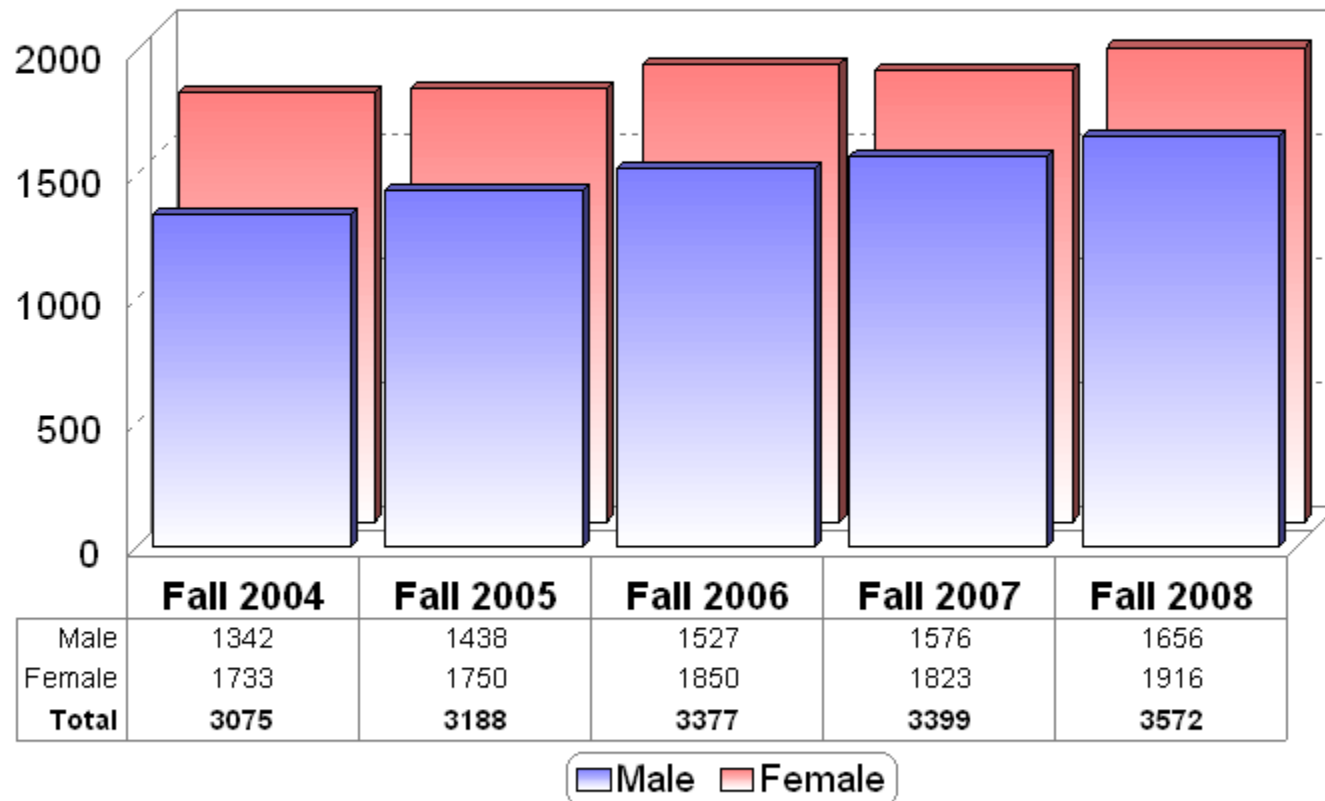
	Fall 2004	Fall 2005	Fall 2006	Fall 2007	Fall 2008
History	86	90	89	87	87
Human Services	77	64	59	78	99
Industrial Tech.	182	201	234	254	266
Interdisciplinary Studies	174	152	165	130	301
Mathematics	38	43	34	39	39
Middle School Education	35	28	27	28	34
Nursing	262	254	261	250	277
Occ/Voc Education	4	3	1	2	1
Political Science	35	42	41	37	38
Psychology	142	141	145	137	150
Sociology	22	28	29	37	26
Special Education	88	112	110	98	108
Technology Education	19	16	20	20	17
Pre-majors	237	219	213	242	235
Total	3216	3302	3483	3484	3784

Source: FSC Data Warehouse

*Includes second majors

Enrollment (Day Students)

Gender



Source: FSC Data Warehouse

Enrollment (Day Students)

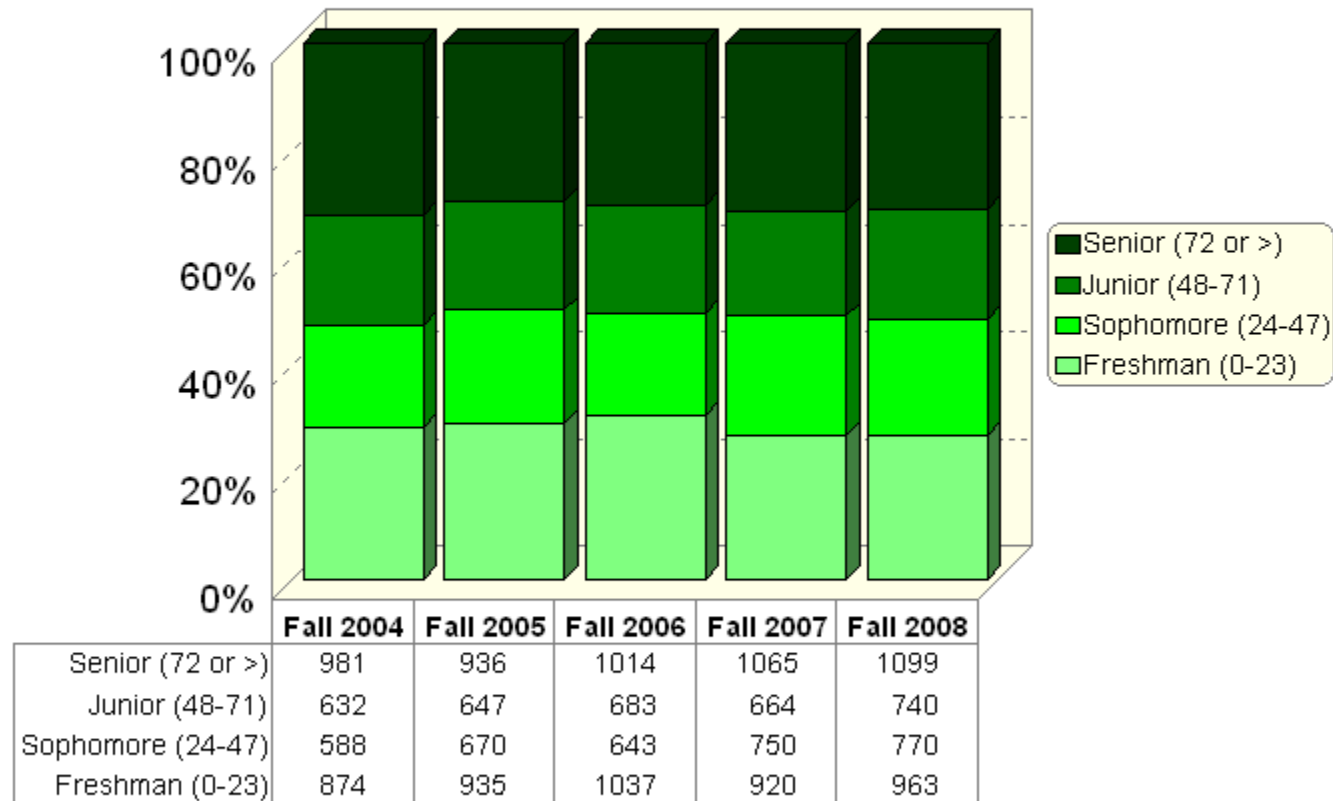
Age Distribution

	Fall 2004	Fall 2005	Fall 2006	Fall 2007	Fall 2008
<18	38	37	33	34	44
18	589	495	601	565	629
19	584	632	606	686	656
20	515	587	626	582	645
21	462	520	574	600	593
22-24	542	573	605	622	678
25-29	128	128	143	137	148
30-34	46	55	48	62	51
35-39	47	39	41	35	36
40-44	40	37	32	25	26
45-49	27	26	29	21	28
50-54	16	18	19	15	22
55-59	6	6	5	5	8
60-64	3	6	7	7	1
>64	1	4	4	2	4
Unknown	31	25	4	1	3
Total	3075	3188	3377	3399	3572

Source: FSC Data Warehouse

Enrollment (Day Students)

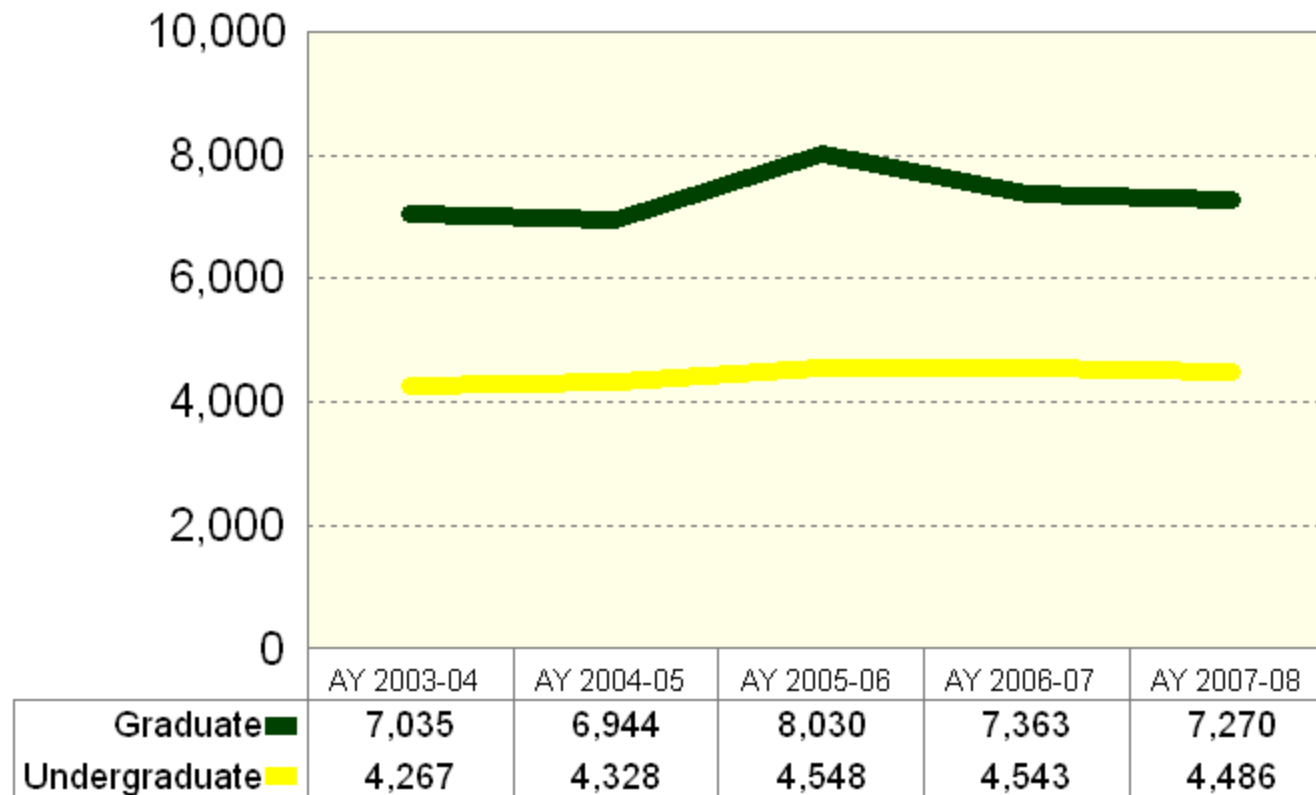
Class Standing (Completed Credits)



Source: FSC Data Warehouse

Annual Student Headcount

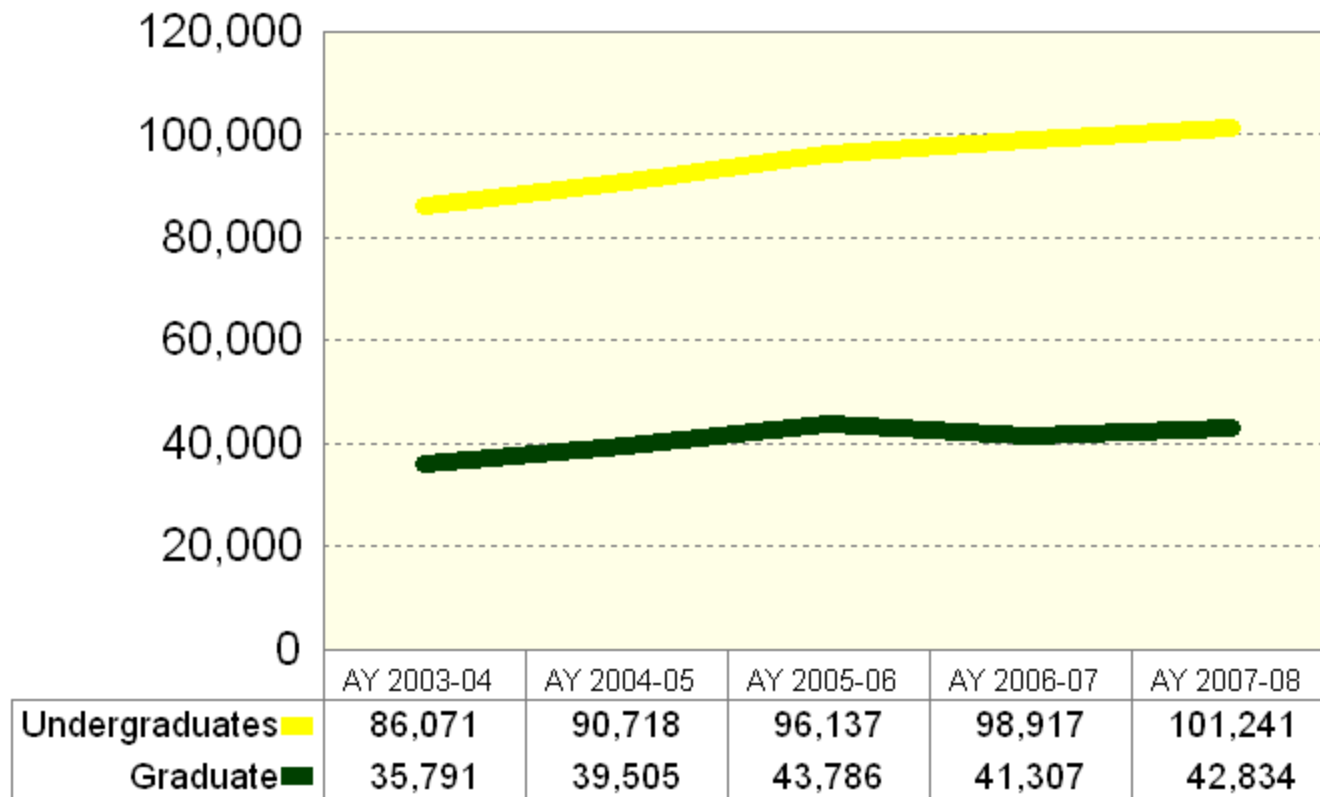
Unduplicated



Source: IPEDS / HEIRS

Annual Credit Hour Activity

Credit Hours



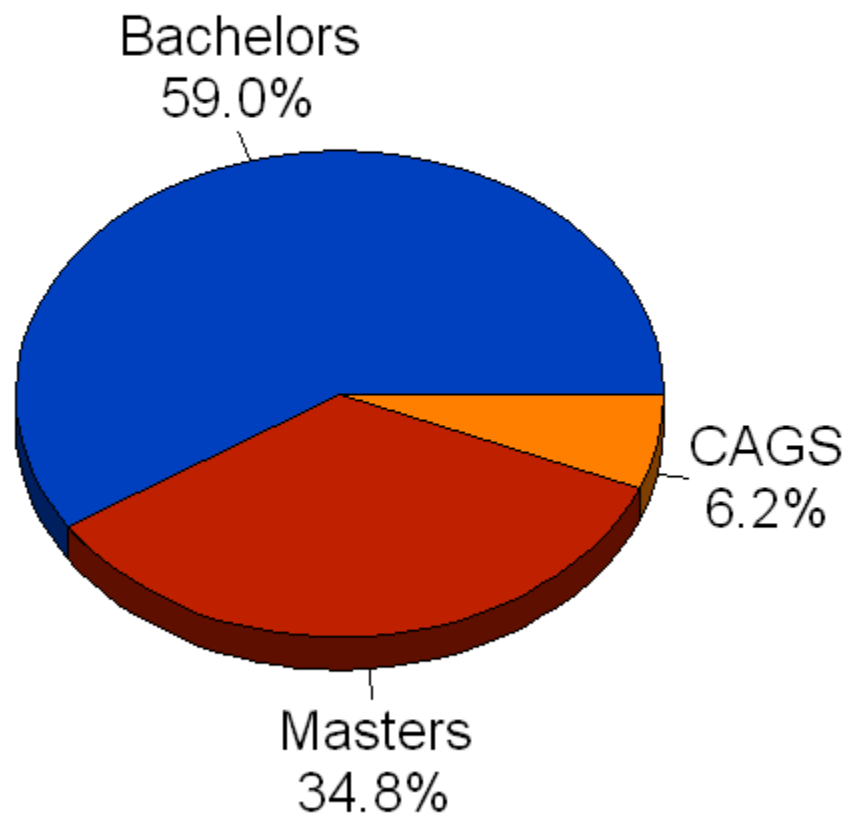
Source: IPEDS / HEIRS

DEGREES AWARDED



Degrees Awarded - 2008

Level



Source: IPEDS Completions Survey

Degrees Awarded - 2008

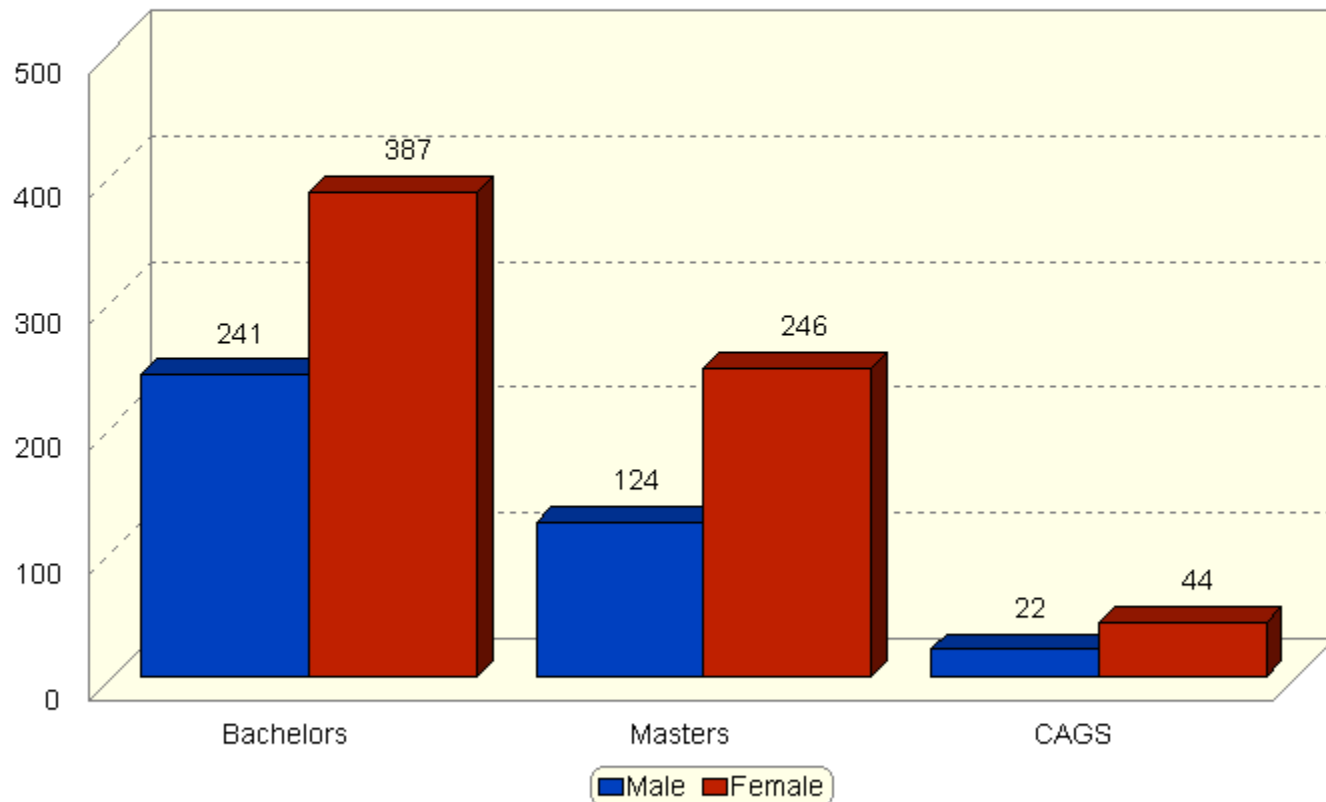
Gender / Ethnicity

	Nonresident Alien	Black	Native American	Asian	Hispanic	White	Unknown	Total
<u>Bachelors</u>								
Male	1	9	0	4	10	199	18	241
Female	5	9	0	12	9	324	28	387
<u>Masters</u>								
Male	37	0	0	1	1	71	14	124
Female	11	1	0	1	5	189	39	246
<u>CAGS</u>								
Male	0	1	0	0	0	15	6	22
Female	1	0	0	0	0	35	8	44
<u>Total</u>								
Male	38	10	0	5	11	285	38	387
Female	17	10	0	13	14	548	75	677

Source: IPEDS Completions Survey

Degrees Awarded - 2008

Gender



Source: IPEDS Completions Survey

Bachelors Degrees Awarded

Race / Ethnicity

	2004	2005	2006	2007	2008
Native American	0	0	0	2	0
Asian	9	11	13	10	16
Black	24	15	19	13	18
Hispanic	17	14	12	24	19
White	489	409	478	528	523
Nonresident Alien	5	8	0	7	6
Unknown	35	32	38	38	46
Total	579	489	560	622	628

Source: IPEDS Completions Surveys

Masters Degrees Awarded

Race / Ethnicity

	2004	2005	2006	2007	2008
Native American	0	1	0	0	0
Asian	2	2	7	5	2
Black	6	5	5	13	1
Hispanic	6	0	5	4	6
White	386	295	388	377	260
Nonresident Alien	23	25	41	45	48
Unknown	42	40	38	31	53
Total	465	368	484	475	370

Source: IPEDS Completions Surveys

CAGS Awarded

Race / Ethnicity

	2004	2005	2006	2007	2008
Native American	0	0	0	0	0
Asian	0	0	0	0	0
Black	1	2	0	1	1
Hispanic	1	0	1	0	0
White	35	45	43	52	50
Nonresident Alien	0	0	0	0	1
Unknown	1	3	9	2	14
Total	38	50	53	55	66

Source: IPEDS Completions Surveys

Degrees Awarded

Program

	2004	2005	2006	2007	2008
BACHELORS					
BA English	9	5	7	8	8
BA Gen. Studies / Interdisciplinary	0	0	0	1	1
BA History	3	2	0	2	3
BA Political Science	0	0	1	1	0
BA Psychology	0	4	0	1	1
BA Sociology	1	0	0	0	2
BS Biology	14	3	5	21	26
BS Business Administration	101	86	107	91	84
BS Clinical Laboratory Science	4	0	0	0	0
BS Communications Media	100	81	91	100	86
BS Computer Information Systems	25	12	10	11	9
BS Computer Science	11	15	7	12	14
BS Criminal Justice	24	16	29	41	45
BS Economics	3	0	2	0	2
BS English	25	20	18	23	25
BS Exercise and Sport Science	1	9	13	17	17
BS Gen. Studies / Interdisciplinary	39	38	57	70	72
BS Geography	5	5	1	0	0
BS History	8	14	13	11	14
BS Human Services	27	16	19	25	13
BS Industrial Technology	26	24	24	40	34

Source: IPEDS Completions Surveys

Degrees Awarded

Program

	2004	2005	2006	2007	2008
BACHELORS (Cont.)					
BS Mathematics	4	3	7	2	7
BS Nursing	40	42	33	33	37
BS Political Science	7	1	7	7	8
BS Psychology	21	28	23	27	31
BS Sociology	17	7	6	7	13
BS Vocational Educ.	11	11	9	7	9
BSEd Early Childhood Educ.	16	8	16	17	18
BSEd Elementary Educ.	16	23	24	30	29
BSEd Middle School Educ.	3	3	1	1	2
BSEd Special Educ.	16	12	22	16	18
BSEd Technology Educ.	2	1	7	0	0
MASTERS					
MA Biology	0	5	4	1	0
MA English	5	5	8	13	7
MA History	1	1	0	0	0
MAT Biology	3	0	0	3	2
MAT Earth Science	0	1	0	0	0
MAT English	5	3	6	4	0
MAT History	1	2	3	4	4
MAT Mathematics	4	0	0	0	0
MS Communications Media	7	7	7	13	9
MS Computer Science	10	9	21	21	26

Source: IPEDS Completions Surveys

Degrees Awarded

Program

	2004	2005	2006	2007	2008
MASTERS (Cont.)					
MS Counseling	26	19	32	17	23
MS Criminal Justice	6	2	1	0	0
MS Nursing	7	2	8	0	2
MEd Arts Educ.	11	17	9	3	4
MEd Curriculum & Teaching	0	0	0	0	1
MEd Early Childhood Educ.	8	7	6	13	12
MEd Educ. Leadership	19	15	24	17	13
MEd Elementary Educ.	19	92	27	21	30
MEd General Educ. Studies	179	61	155	186	105
MEd Middle School Educ.	14	9	15	6	8
MEd Occupational Educ.	5	5	11	7	4
MEd Science Educ.	7	4	2	3	3
MEd Secondary Educ.	14	3	8	4	3
MEd Special Educ.	81	56	84	70	64
MEd Technology Educ.	5	7	6	3	2
MBA	28	36	47	66	48
CAGS					
CAGS Teacher Leadership	1	0	0	0	0
CAGS Educ. Leadership	25	32	20	36	43
CAGS Interdisciplinary	12	18	33	19	23
Total Bachelors	579	489	560	622	628
Total Masters	465	368	484	475	370
Total CAGS	38	50	53	55	66

Source: IPEDS Completions Surveys

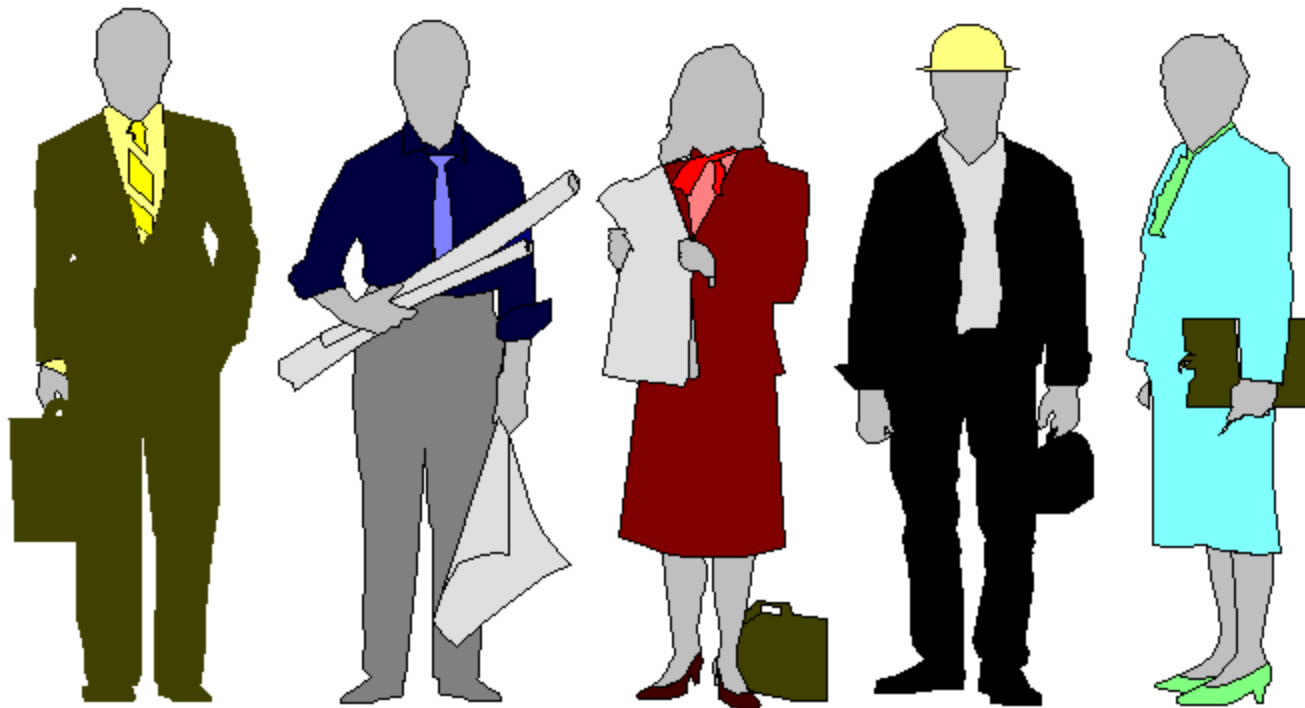
Retention / Graduation Rates

First-time, Full-time Freshmen

Fall Term	Initial Cohort	After 1st Year	After 2nd Year	After 3rd Year	After 4th Year	After 5th Year	After 6th Year
Entered 2002	497						
% Enrolled		74.0	62.8	57.5	25.4	5.2	1.4
% Dropout		26.0	37.2	42.5	51.1	49.1	48.1
% Graduated					23.5	45.7	50.5
Entered 2003	586						
% Enrolled		77.1	64.0	59.4	27.6	7.2	
% Dropout		22.9	36.0	40.6	48.0	46.3	
% Graduated					24.4	46.5	
Entered 2004	713						
% Enrolled		77.7	65.1	60.0	29.5		
% Dropout		22.3	34.9	40.0	49.0		
% Graduated					21.5		
Entered 2005	599						
% Enrolled		74.6	58.6	56.9			
% Dropout		25.4	41.4	43.1			
% Graduated							
Entered 2006	728						
% Enrolled		74.7	62.5				
% Dropout		25.3	37.5				
% Graduated							
Entered 2007	699						
% Enrolled		74.0					
% Dropout		26.0					
% Graduated							

Source: Office of Institutional Research

FACULTY ADMINISTRATION & STAFF



Full-time Employees

Occupational Classification

	Fall 2004	Fall 2005	Fall 2006	Fall 2007	Fall 2008
Faculty	166	166	174	176	184
Exec. / Administrative	64	55	60	61	59
Other Professional	53	50	51	55	60
Tech. / Paraprofessional	27	24	26	26	25
Clerical / Secretarial	86	84	83	85	87
Skilled Crafts	30	33	31	31	30
Service / Maintenance	57	50	53	53	56
Total	483	462	478	487	501

Source : IPEDS Fall Staff Surveys

Full-time Employees

Gender / Race

	Fall 2004	Fall 2005	Fall 2006	Fall 2007	Fall 2008
<u>Gender</u>					
Male	221	225	227	220	231
Female	262	237	251	267	270
<u>Race / Ethnicity</u>					
Amer. Ind. / Alaska Native	0	0	0	0	0
Asian / Pacific Islander	17	14	16	15	15
Black non-Hispanic	16	16	16	13	14
Hispanic	5	6	5	4	5
White non-Hispanic	445	426	441	445	465
Nonresident Alien	0	0	0	0	2
Unknown	0	0	0	10	0
Total	483	462	478	487	501

Source : IPEDS Fall Staff Surveys

Full-time Faculty

Rank / Gender

	Fall 2004	Fall 2005	Fall 2006	Fall 2007	Fall 2008
	Male / Female	Male / Female	Male / Female	Male / Female	Male / Female
Professor	35/23	35/22	33/23	34/23	34/26
Assoc. Professor	20/20	21/19	30/21	30/22	35/23
Asst. Professor	35/25	36/28	29/33	24/35	27/35
Instructor	1/7	1/4	1/4	0/8	0/4
Total	91/75	93/73	93/81	88/88	96/88

Source : IPEDS Faculty Surveys

Full-time Faculty

Rank / Tenure

	Fall 2004	Fall 2005	Fall 2006	Fall 2007	Fall 2008
	Tenured / Non-tenured	Tenured / Non-tenured	Tenured / Non-tenured	Tenured / Non-tenured	Tenured / Non-tenured
Professor	57/0	57/0	56/0	57/0	60/0
Assoc. Professor	39/2	38/2	49/2	49/3	52/6
Asst. Professor	16/44	21/43	14/48	13/46	6/56
Instructor	0/8	0/5	0/5	0/8	0/4
Total	112/54	116/50	119/55	119/57	118/66

Source : IPEDS Faculty Surveys

LIBRARY



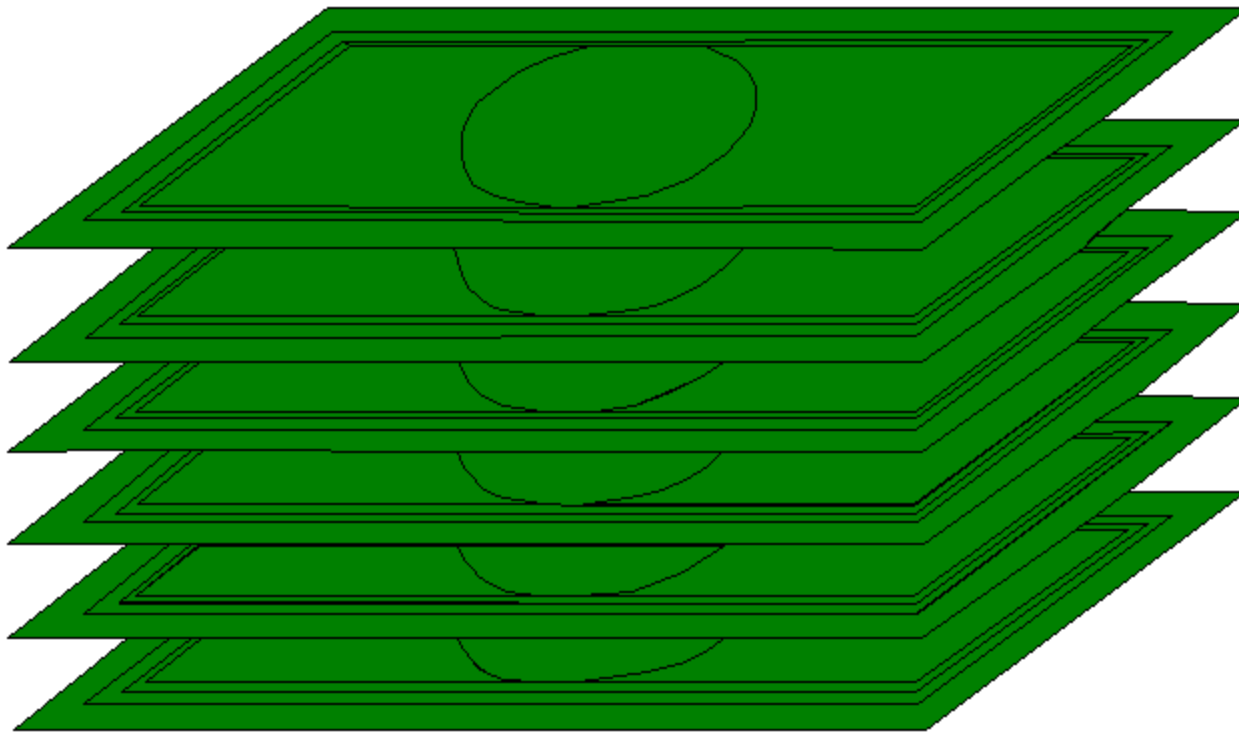
Library Collection

Library Holdings

	2003-04	2004-05	2005-06	2006-07	2007-08
Books	241,122	242,418	243,737	259,321	248,644
Bound Journals	28,070	26,130	25,735	25,659	23,358
Pamphlets	403	408	408	410	410
Microforms	457,283	456,892	456,554	456,554	347,845
Sound Recordings	1,843	1,845	1,950	2,211	2,336
Fine Arts	223	224	231	244	248
Subscriptions	2,256	2,208	2,069	2,967	2,104

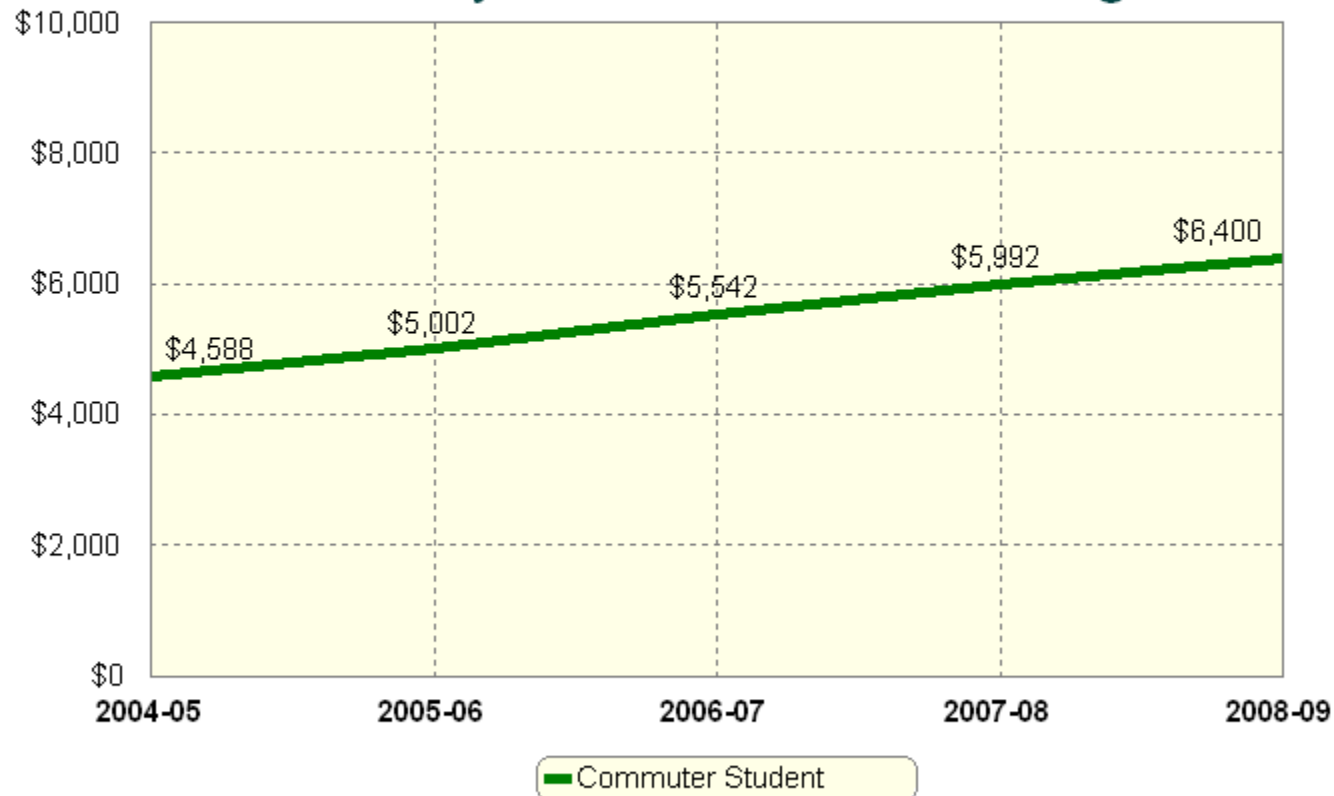
Source: Library Annual Reports

COLLEGE FINANCES



Undergraduate Tuition & Fees

Annual Day Student In-state Charges



Source: Student Accounts Office

College Finances

Revenues

	FY 2004	FY 2005	FY 2006	FY 2007	FY 2008
Tuition & Fees	\$15,305,436	\$17,292,843	\$18,645,117	\$20,385,934	\$22,144,422
State Appropriations	\$25,199,981	\$27,375,808	\$29,645,087	\$31,702,393	\$34,063,661
Federal Grants & Contracts	\$3,517,949	\$3,381,327	\$3,175,644	\$3,391,927	\$3,610,402
State Grants & Contracts	\$1,703,908	\$1,863,416	\$1,741,985	\$1,745,977	\$1,917,636
Private Gifts, Grants & Contracts	\$249,743	\$133,798	\$165,375	\$265,020	\$243,963
Auxiliary Enterprises	\$4,317,584	\$5,059,563	\$5,556,027	\$6,055,358	\$6,195,536
Other	\$2,181,186	\$2,928,853	\$4,325,297	\$5,304,142	\$3,436,382
Total	\$52,475,787	\$58,035,608	\$63,254,532	\$68,850,751	\$71,612,002

Source: IPEDS Finance Surveys

College Finances

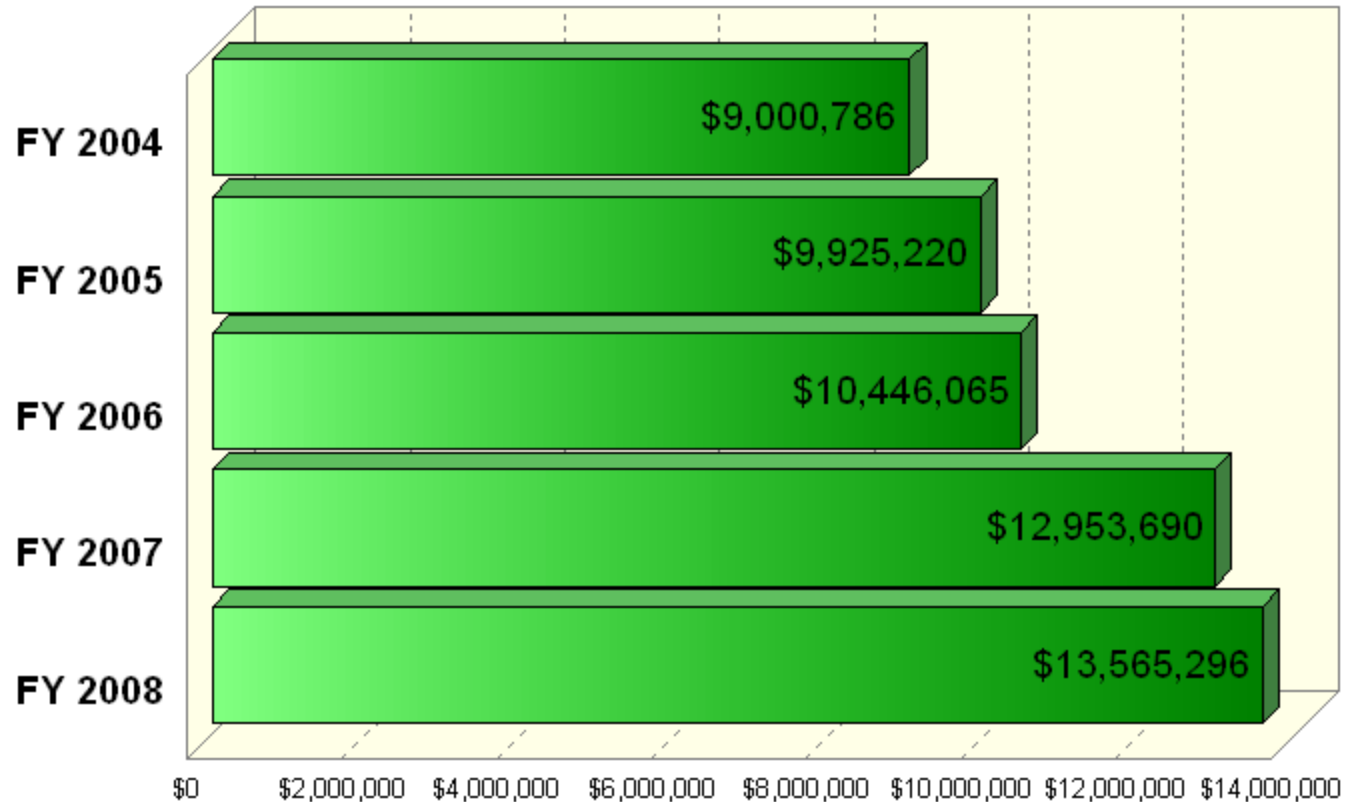
Expenditures

	FY 2004	FY 2005	FY 2006	FY 2007	FY 2008
Instruction	\$18,110,210	\$18,919,282	\$22,939,082	\$24,257,025	\$26,748,745
Research	\$130,803	\$164,787	\$165,559	\$61,078	\$37,104
Public Service	\$786,628	\$638,147	\$603,240	\$493,097	\$558,421
Academic Support	\$4,316,776	\$4,621,363	\$4,686,355	\$5,133,476	\$5,362,390
Student Services	\$5,456,327	\$5,997,856	\$6,591,683	\$7,070,231	\$7,511,026
Institutional Support	\$6,798,175	\$7,206,713	\$6,173,241	\$6,717,353	\$7,300,693
Plant Operation	\$5,947,821	\$7,254,348	\$8,190,791	\$9,704,409	\$11,043,640
Depreciation	\$2,416,473	\$2,588,240	\$2,648,290	\$3,112,604	\$3,227,502
Scholarships & Fellowships	\$1,526,192	\$1,594,961	\$224,472	\$280,471	\$147,800
Auxiliary Enterprises	\$4,037,519	\$4,765,719	\$5,419,873	\$5,714,435	\$5,809,898
Interest	\$198,855	\$307,292	\$316,491	\$548,265	\$657,783
Total	\$49,725,779	\$54,058,708	\$57,959,077	\$63,092,444	\$68,405,002

Source: IPEDS Finance Surveys

FSC Foundation

Net Assets



Source: FSC Foundation Audit Reports