
May 2006

Questions, comments or suggestions regarding the material contained in this Factbook may be addressed to:

**Terrance J. Carroll
Director of Institutional Research
Fitchburg State College
160 Pearl St.
Fitchburg, MA 01420**

**Voice: 978-665-3171
E-mail: tcarroll@fsc.edu**

Table of Contents

- Admissions

- Admissions Yield	Page 2
- New Students - Gender / Ethnicity	Page 3
- Math SAT Distribution	Page 4
- Verbal SAT Distribution	Page 5
- Combined SAT Distribution	Page 6
- Top Feeder High Schools	Page 7
- Top Feeder Transfer Colleges	Page 8
- New Students	Page 9
- New Freshmen and Transfers by Major	Page 10

- Enrollment

- Enrollment - Count / Status / Gender / Ethnicity	Page 13
- Enrollment - Headcount / FTE	Page 14
- Residence Halls	Page 15
- Undergraduate Majors	Page 16
- Enrollment - Gender	Page 18
- Student Age Distribution	Page 19
- Enrollment - Class Standing	Page 20
- Annual Student Headcount	Page 21
- Annual Credit Hours	Page 22

Table of Contents

- Degrees Awarded
 - Degrees Awarded - Level Page 24
 - Degrees Awarded - Gender / Ethnicity Page 25
 - Degrees Awarded - Gender Page 26
 - Bachelors Degrees Awarded - Race / Ethnicity Page 27
 - Masters Degrees Awarded - Race / Ethnicity Page 28
 - CAGS Awarded - Race / Ethnicity Page 29
 - Degrees Awarded - Program Page 30
 - Retention and Graduation Rates Page 33

- Faculty, Administration, and Staff
 - Full-time Employees - Occupational Classification Page 35
 - Full-time Employees - Gender / Race Page 36
 - Full-time Faculty - Rank / Gender Page 37
 - Full-time Faculty - Rank / Tenure Page 38

- Library
 - Library Collection Page 40
 - Library Collection - Books Page 41
 - Library Circulation Page 42

Table of Contents

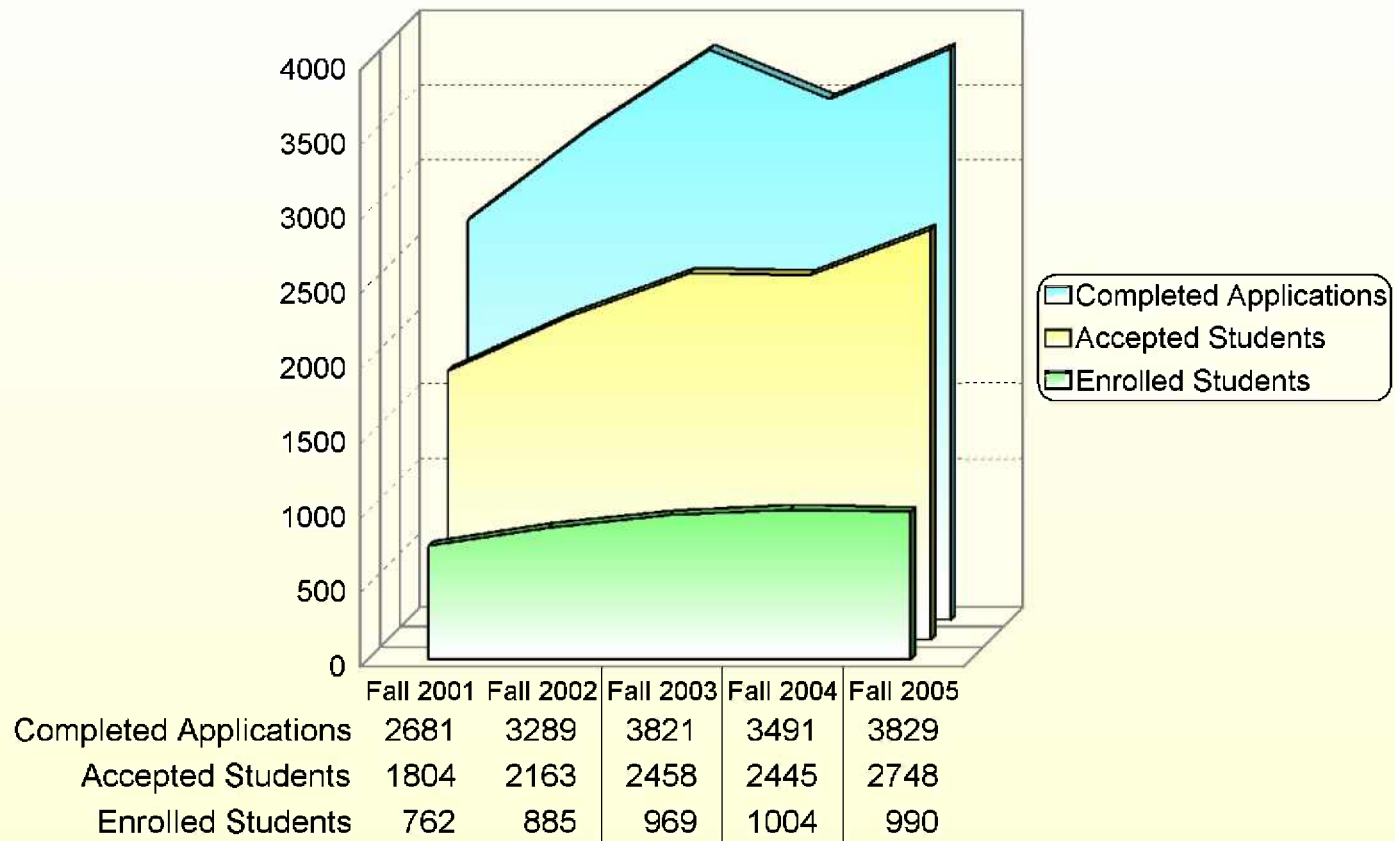
- College Finances
 - Undergraduate Tuition and Fees Page 44
 - College Finances - Revenues Page 45
 - College Finances - Expenditures Page 46
 - FSC Foundation - Net Assets Page 47

ADMISSIONS



Admissions Yield

Bachelor Degree Seeking



Source: HEIRS

New Students

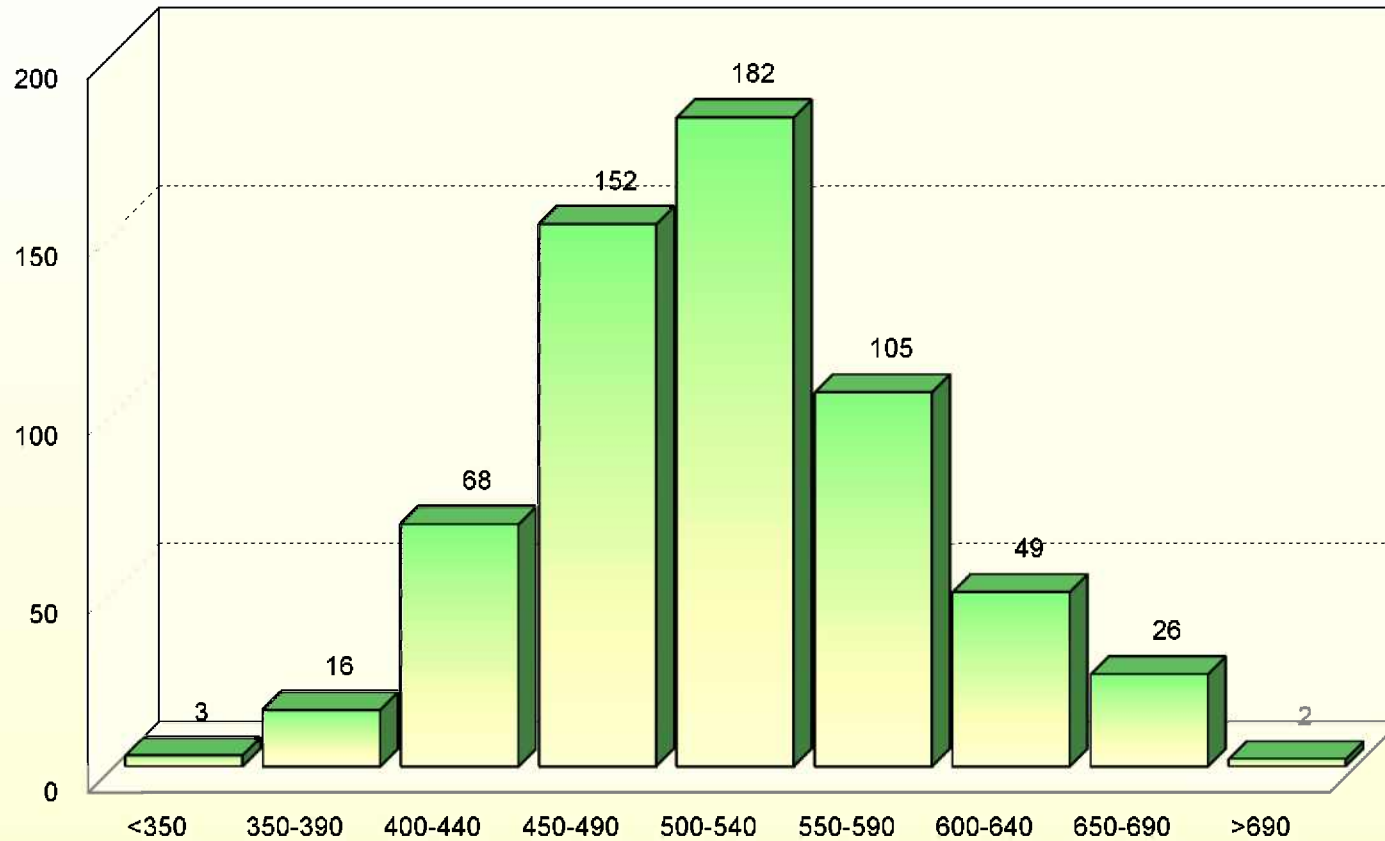
Gender / Ethnicity

Fall 2005	First-time Freshmen			Transfers			All New Students		
	Male	Female	Total	Male	Female	Total	Male	Female	Total
<u>Race / Ethnicity</u>									
Nonresident Alien	1	0	1	0	5	5	1	5	6
Black	10	5	15	9	14	23	19	19	38
Native American	1	1	2	0	2	2	1	3	4
Asian	11	5	16	4	2	6	15	7	22
Hispanic	5	8	13	5	9	14	10	17	27
White	266	268	534	133	188	321	399	456	855
Cape Verdean	1	0	1	2	0	2	3	0	3
Unknown	12	13	25	6	4	10	18	17	35
Total	307	300	607	159	224	383	466	524	990

Source: HEIRS

Math SAT Distribution

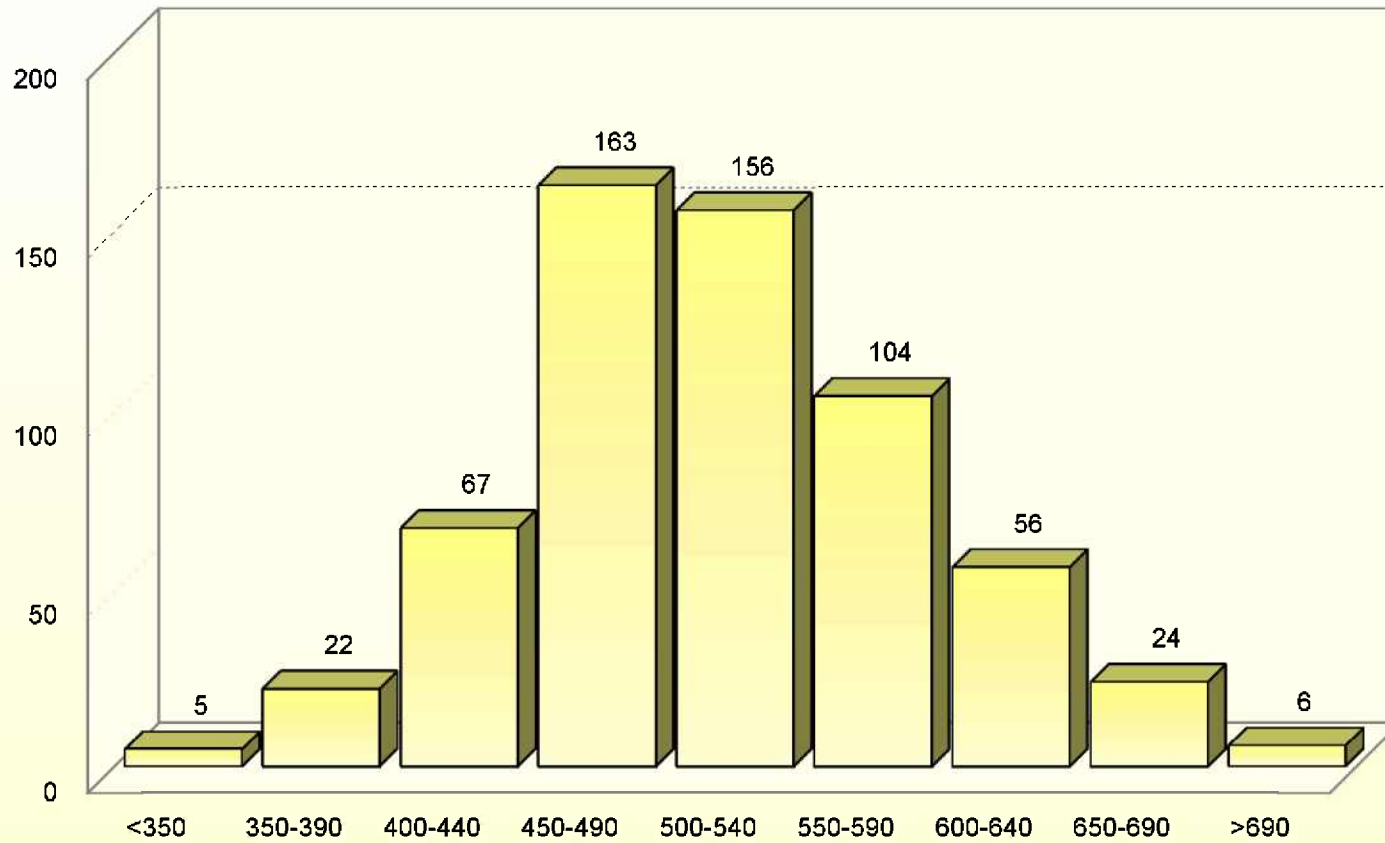
Fall 2005



Source: HEIRS

Verbal SAT Distribution

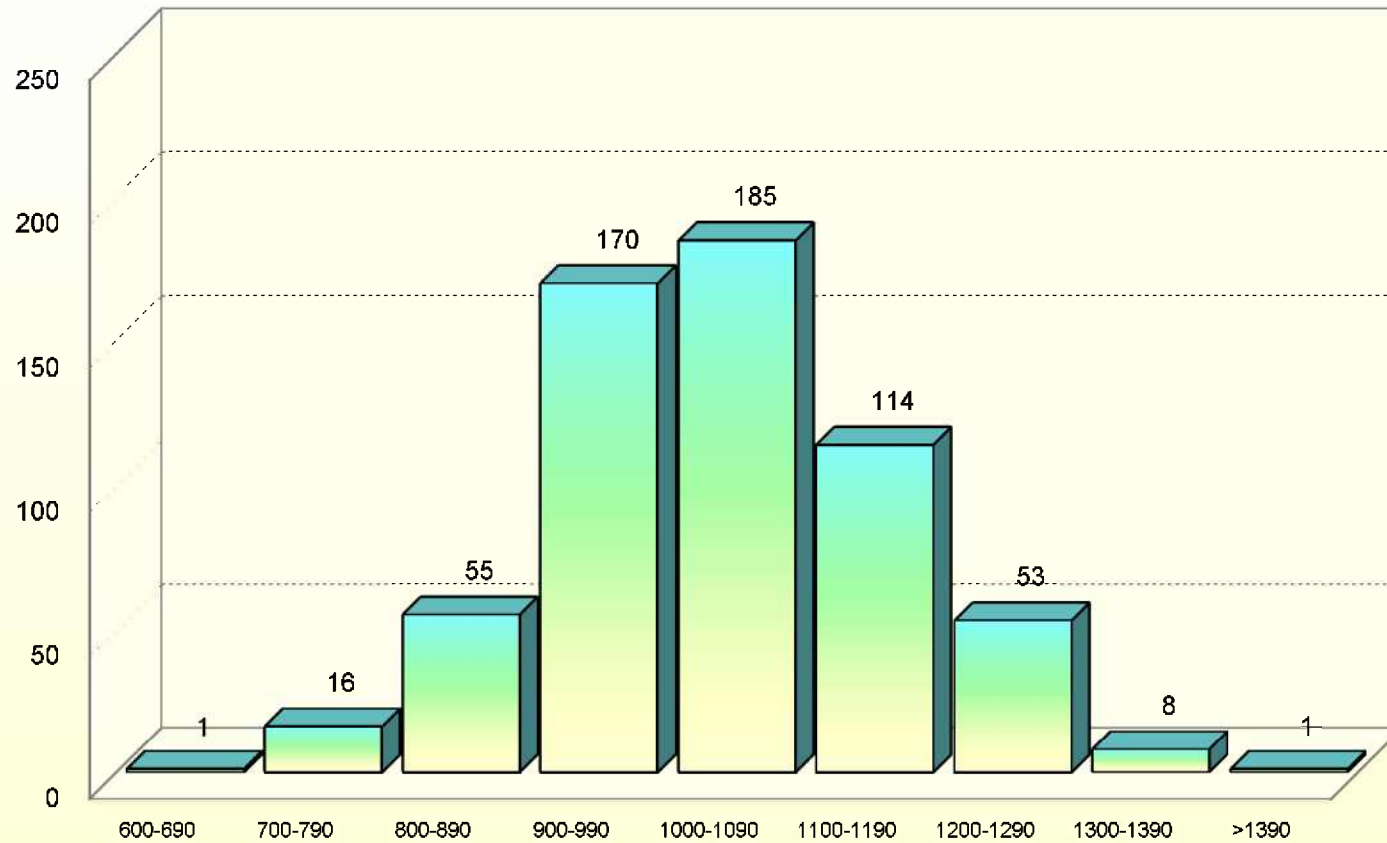
Fall 2005



Source: HEIRS

Combined SAT Distribution

Fall 2005



Source: HEIRS

Top Feeder High Schools

Fall 2005

Fitchburg	47
Leominster	23
Gardner	17
Lunenburg	17
North Middlesex	17
Narragansett	15
Lowell	13
Oakmont	12
Ayer	9
Montachusett	9
St. Bernard's	9

Source: HEIRS

Top Feeder Transfer Colleges

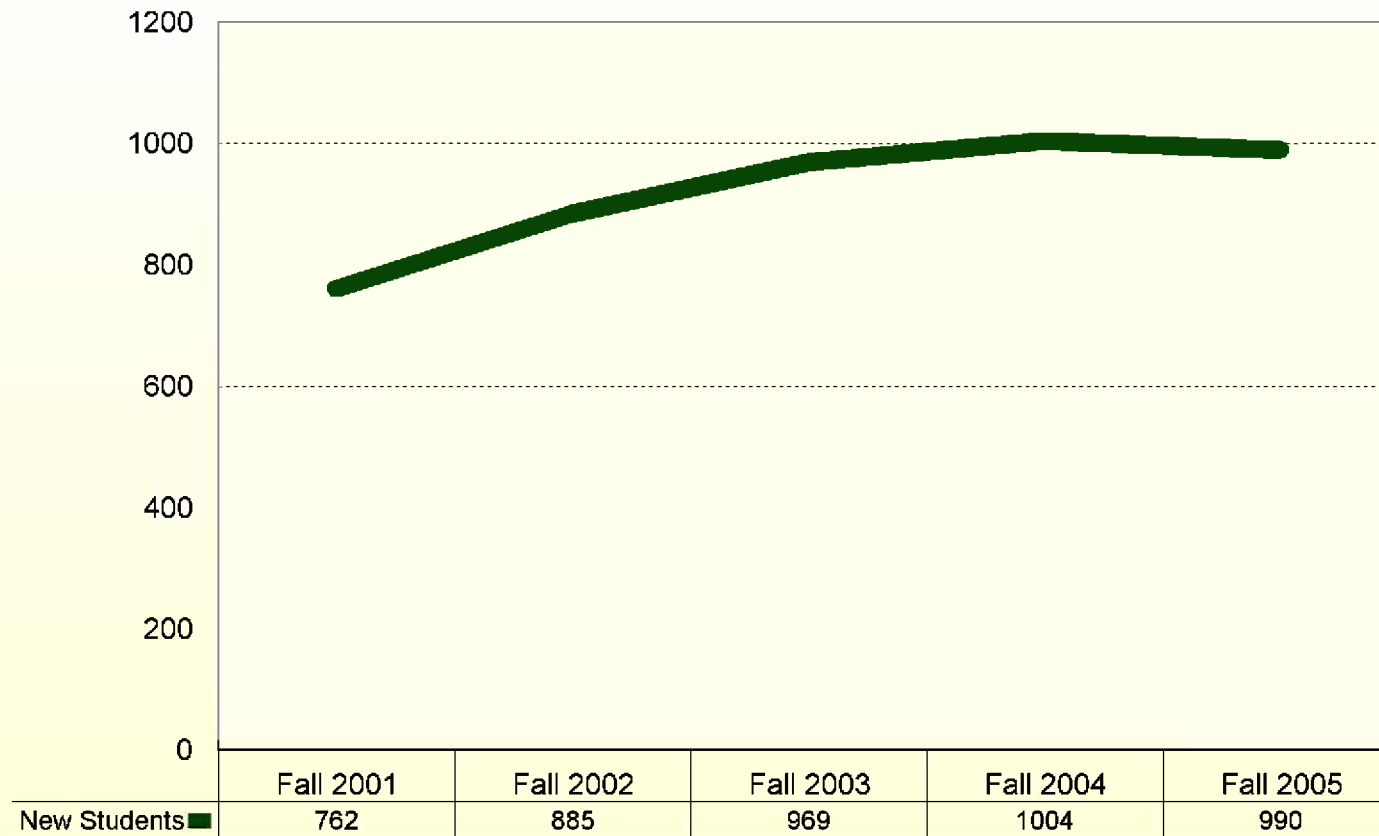
Fall 2005

Mt. Wachusett C.C.	100
Middlesex C.C.	28
Quinsigamond C.C.	25
No. Essex C.C.	19
Worcester State	11
U Mass. Lowell	10
Dean	6
Framingham State	6
Massasoit C. C.	6
North Shore C. C.	6

Source: HEIRS

New Students

Freshmen & Transfers



Source: HEIRS

New Freshmen & Transfers

Major at Time of Enrollment

	Fall 2001	Fall 2002	Fall 2003	Fall 2004	Fall 2005
Biology	17	38	31	29	32
Exercise Sci.	0	in Biology	32	23	33
Business Admin.	95	85	104	123	102
Clinical Lab. Sci.	5	7	0	0	0
Communications Media	116	144	150	160	156
Comp. Inf. Sys.	23	18	19	9	15
Computer Sci.	38	32	32	20	17
Criminal Justice	29	39	55	56	69
Early Child. Educ.	21	36	37	34	46
Economics	1	0	0	1	0
Elementary Educ.	64	66	73	56	60
English	37	29	36	43	41
Geo/Earth Sci.	2	5	1	1	1
Continued					

Source: HEIRS

New Freshmen & Transfers

Major at Time of Enrollment

	Fall 2001	Fall 2002	Fall 2003	Fall 2004	Fall 2005
History	13	14	20	28	22
Human Services	18	17	11	18	7
Industrial Tech.	33	46	54	70	57
Interdisc. Studies	5	7	6	2	10
Mathematics	9	4	9	15	12
Middle Sch. Educ.	9	10	5	7	5
Nursing	53	68	72	85	75
Political Sci.	2	4	6	5	14
Psychology	32	52	32	45	32
Sociology	4	6	4	7	8
Special Educ.	24	33	37	27	42
Technology Educ.	4	0	2	3	5
Vocational Educ.	9	8	7	5	3
Pre-majors	99	117	134	132	126
Total	762	885	969	1004	990

Source: HEIRS

