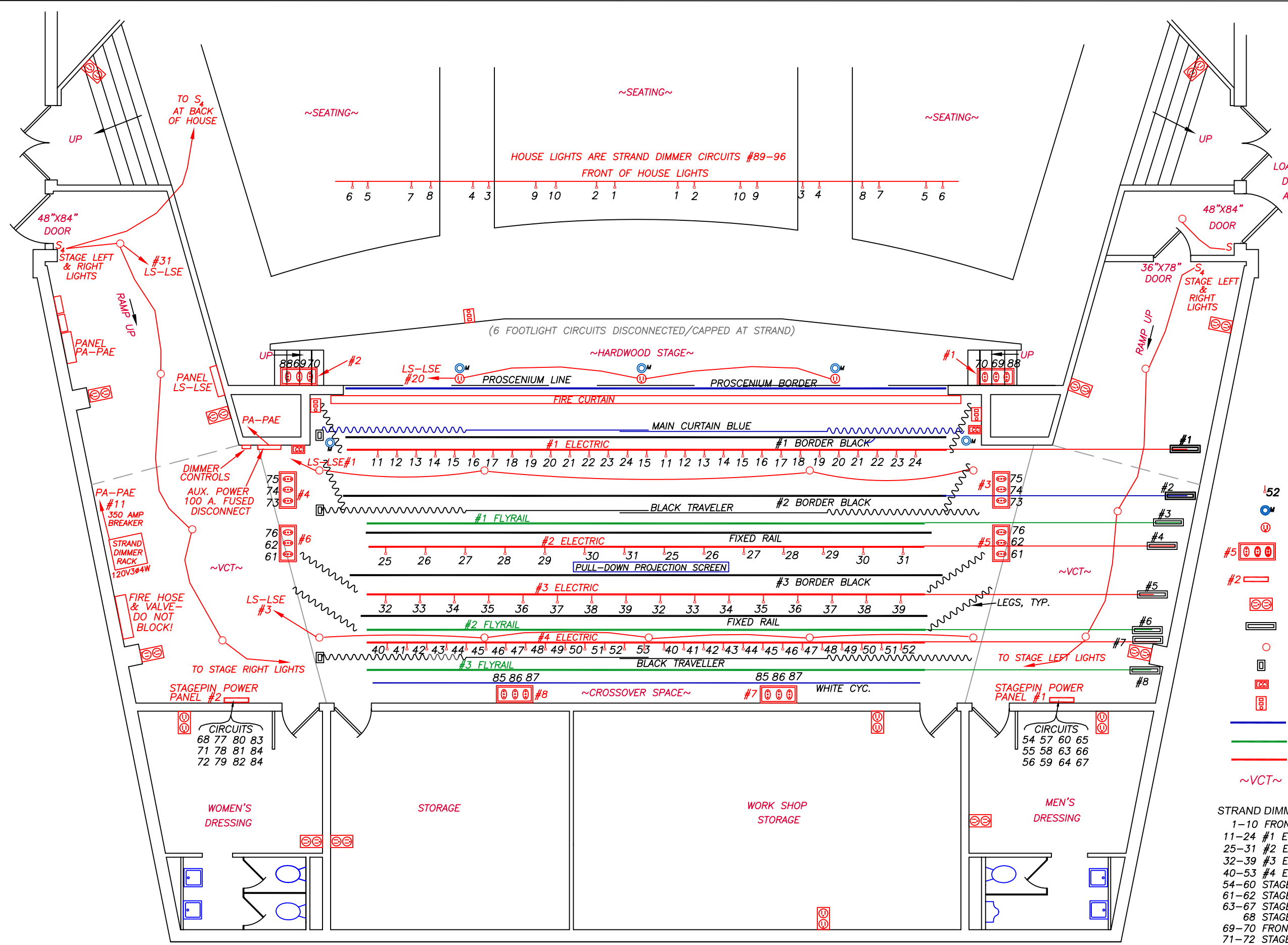


FITCHBURG STATE COLLEGE

FACILITIES DIVISION - 160 PEARL STREET, FITCHBURG MA 01420
 PHONE: (978) 665-3115 FAX: (978) 665-3682

WESTON AUDITORIUM
 STAGE TECH DETAIL

APPROVED BY: M.D.
 DRAWING FILE: WestonStageTech
 PROJECT #: FLOORPLANS
 SCALE: 1/8" = 1'-0"
 DATE: MARCH 16, 2007
 DRAWN BY: H.E.M.



LEGEND

- !52 - 24" STAGEPIN TAIL & CIRCUIT #
- ⊙ - FLOOR OUTLETS MICROPHONE
- ⊙ - FLOOR OUTLET EDISON
- #5 ⊞ ⊞ ⊞ - FLOOR OR WALL POCKETS - DIMMED POWER STAGEPIN WITH CIRCUIT #s
- #2 ⊞ ⊞ ⊞ - POWER PANEL #2 - DIMMED STAGEPIN, 11 OR 12 CIRCUITS
- ⊞ ⊞ ⊞ - 120V AC POWER EDISON
- ⊞ ⊞ ⊞ - PULLEY RIGGING
- - STAGE LIGHTS
- ⊞ ⊞ ⊞ - CURTAIN PULLS
- ⊞ ⊞ ⊞ - CLEAR COM JACK
- ⊞ ⊞ ⊞ - VOICE, DATA, VIDEO JACK
- — — — — OVERHEAD RAILS/BORDERS
- — — — — FLYRAILS
- — — — — ELECTRIC FLYRAILS
- ~VCT~ - VINYL COMP. TILE FLOOR

- STRAND DIMMER RACK CIRCUITS
- 1-10 FRONT OF HOUSE
 - 11-24 #1 ELECTRIC
 - 25-31 #2 ELECTRIC
 - 32-39 #3 ELECTRIC
 - 40-53 #4 ELECTRIC
 - 54-60 STAGEPIN POWER BOX #1
 - 61-62 STAGE FLOOR POCKETS
 - 63-67 STAGEPIN POWER BOX #1
 - 68 STAGEPIN POWER BOX #2
 - 69-70 FRONT PROSC. WALL POCKETS
 - 71-72 STAGEPIN POWER BOX #2
 - 73-76 STAGE FLOOR POCKETS
 - 77-84 STAGEPIN POWER BOX #2
 - 85-87 BACK/UP STAGE FLOOR POCKETS
 - 88 FRONT PROSC. WALL POCKETS
 - 89-96 HOUSE LIGHTS

~NOTE~
 UNLESS OTHERWISE NOTED, CIRCUIT #'S
 REFER TO STRAND DIMMER RACK CIRCUITS

